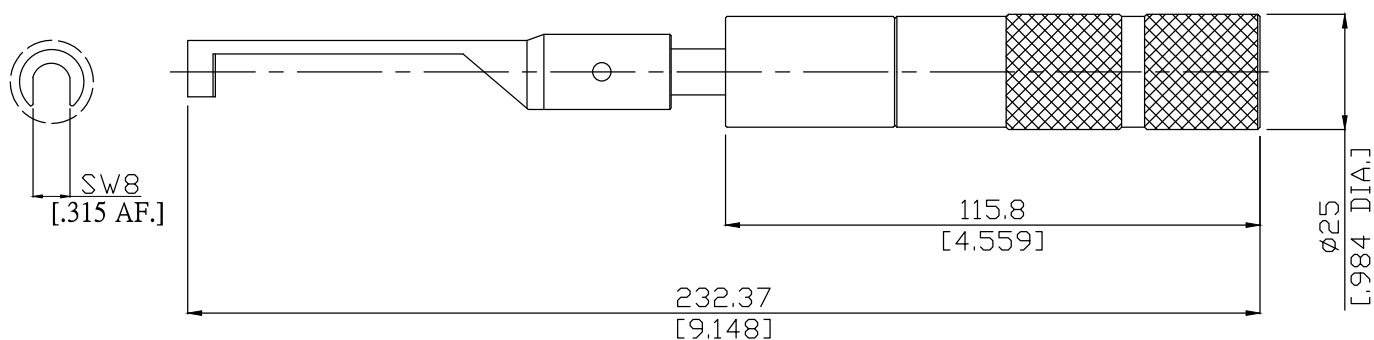


Torque Wrench Screwdriver  
SMA / 3.5mm / 2.92mm / 2.4mm / 1.85mm

RN-RTW-SD-8-8



All dimensions are in mm [inch]

Tolerances according to DIN ISO 2768-mH

#### Suitable connector

SMA, 3.5mm, 2.92mm, 2.4mm, 1.85mm

#### Material And Plating

Tooling parts	Material	Plating
Spanner	Tool Steel	Passivated
Handle	Aluminum	Anodized

#### Mechanical data

Width across flats	8 mm [5/16inch]
Torque setting	8 lb-in $\pm$ 0.5lb-in [0.90 Nm $\pm$ 0.06 Nm ]

#### Packing

1 Pcs