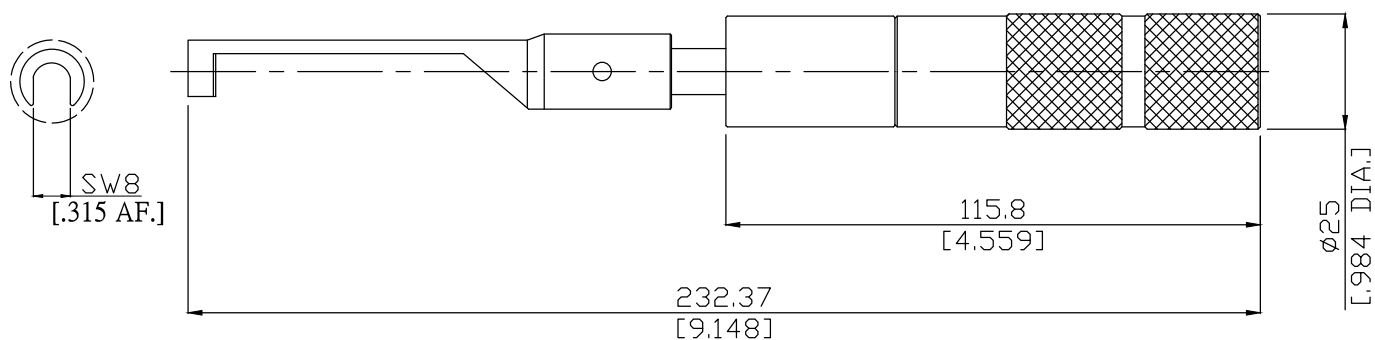


**Torque Wrench Screwdriver
SMA Brass**

RN-RTW-SD-8-5



All dimensions are in mm [inch]
Tolerances according to DIN ISO 2768-mH

Suitable connector

SMA Brass

Material And Plating

Tooling parts	Material	Plating
Spanner	Tool Steel	Passivated
Handle	Aluminum	Anodized

Mechanical data

Width across flats	8 mm [5/16inch]
Torque setting	5 lb-in \pm 0.5lb-in [0.57 Nm \pm 0.06 Nm]

Packing

1 Pcs