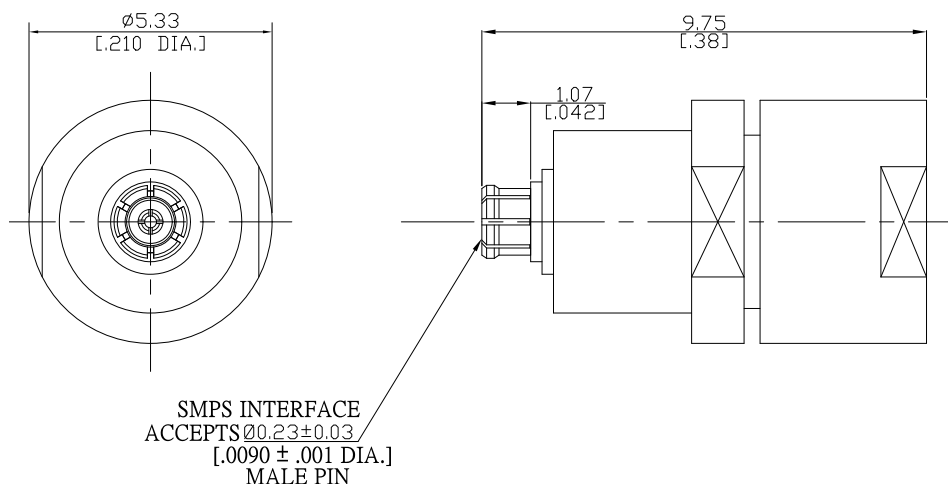


## SMPS Termination Jack 40 GHz, 1 Watt, VSWR ≤ 1.4

### T-PS25-40G1WA / 99



All dimensions are in mm [inch]

Tolerances according to DIN ISO 2768-mH

#### Interface

according to N/A

#### Electrical Data

Impedance	50 $\Omega$
Frequency	DC to 40 GHz
VSWR (Return Loss)	≤ 1.40 (≥ 15.56 dB)
Center contact resistance	≤ 6 m $\Omega$
Outer contact resistance	≤ 2 m $\Omega$
Power Rating	1 W

#### Material And Plating

Piece Parts	Material	Plating
Centre contact	Beryllium Copper	Gold plating, 3 pinch (Non-magnetic nickel-phosphorus underplating, 80 pinch)
Body	Beryllium Copper	Gold plating, 3 pinch (Non-magnetic nickel-phosphorus underplating, 80 pinch)
Insulator	PTFE	

#### Mechanical Data

Coupling mechanisms	Snap-lock	
Mating cycles	Full detent: ≥ 100	Smooth bore: ≥ 500
Center contact captivation: axial	≥ 7 N	
Engagement force	Full detent: 11 N typical	Smooth bore: 5 N typical
Disengagement force	Full detent: 20 N typical	Smooth bore: 4 N typical

#### Environmental Data

Temperature Range	-65°C to +155°C
Thermal shock	MIL-STD-202, Method 107, Condition B
Vibration	MIL-STD-202, Method 204, Condition D
Shock	MIL-STD-202, Method 213, Condition I
Moisture resistance	MIL-STD-202, Method 106
RoHS	compliant

#### Packing

Single or 100