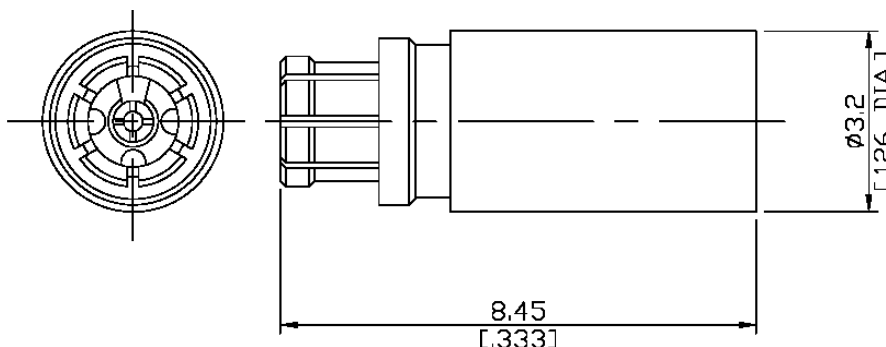




SMPM Jack (Female) Termination
40 GHz, 1 Watt, VSWR ≤ 1.5

T-PM25-40G1WB / 99



All dimensions are in mm [inch]

Tolerances according to DIN ISO 2768-mH

Interface

According to

MIL-PRF-31031; MIL-STD-348B/328

Electrical Data

Impedance

50 Ω

Frequency

DC to 40 GHz

VSWR (Return Loss)

≤ 1.5 (≥ 13.98 dB)

Center contact resistance

≤ 6 mΩ

Outer contact resistance

≤ 2 mΩ

Power Rating

1 W

Material And Plating

Piece Parts	Material	Plating
Centre contact	Beryllium Copper	Gold plating (Non-magnetic nickel-phosphorus underplating)
Body	Beryllium Copper	Gold plating (Non-magnetic nickel-phosphorus underplating)
Insulator	PEI	

Mechanical Data

Coupling mechanisms

Snap-lock

Mating cycles

Full detent: ≥ 100

Smooth bore: ≥ 500

Center contact captivation: axial

≥ 7 N

Engagement force

Full detent: 20 N typical

Smooth bore: 11 N typical

Disengagement force

Full detent: 29 N typical

Smooth bore: 7 N typical

Environmental Data

Temperature Range

-65°C to +165°C

Thermal shock

MIL-STD-202, Method 107, Condition B

Vibration

MIL-STD-202, Method 204, Condition D

Corrosion

MIL-STD-202, Method 101, Condition B

Shock

MIL-STD-202, Method 213, Condition I

Moisture resistance

MIL-STD-202, Method 106

RoHS

compliant

Packing

Single or 100