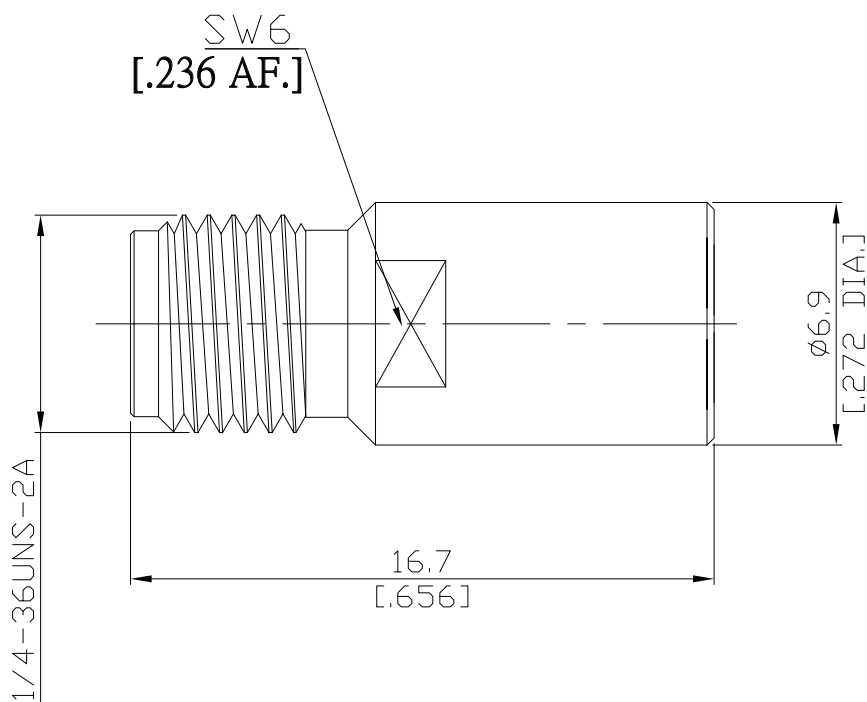


Precision SMA Terminations Jack

T-PCA25-27G1WA/9X



All dimensions are in mm [inch]

Tolerances according to DIN ISO 2768-mH

Interface

According to IEC 60169-15; MIL-C-39012; MIL-STD-348A/310

Electrical Data

Impedance 50 Ω
Frequency DC to 27 GHz
VSWR ≤ 1.2
Power rating (Watt) 1 W

Mechanical Data

Coupling mechanisms Screw-lock
Weight 0.0043 kg

Environmental Data

Temperature range -55°C to +125°C
RoHS compliant

Material And Plating

Connector parts	Material	Plating
Centre contact	Beryllium Copper	Gold plating(Nickel underplated)
Body	Stainless Steel	Passivated
Insulator	PTFE	

Packing

Single or 100