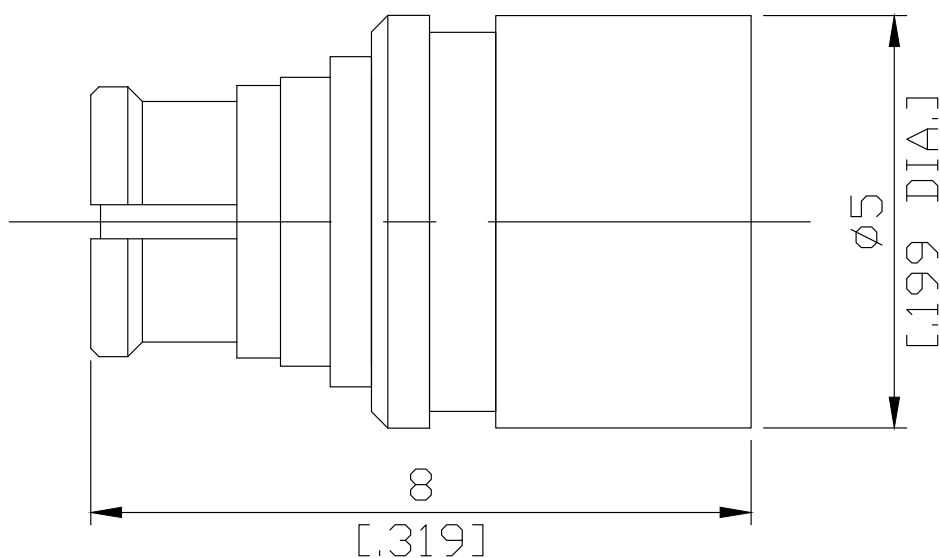




SMP Jack (Female) Termination, 2W DC-18GHz VSWR1.25

T-P25-18G2WA / 91



All dimensions are in mm [inch]

Tolerances according to DIN ISO 2768-mH

Interface

according to

MIL-STD-348B/326

Electrical Data

Impedance

50 Ω

Frequency

DC to 18 GHz

VSWR (Return Loss)

≤ 1.25 (≥ 19.1 dB)

Average Power (@ 25°C)

2 W

Material And Plating

Piece Parts	Material	Plating
Centre contact	Beryllium Copper	Gold plating, 3 μ inch (Non-magnetic nickel-phosphorus underplating, 80 μ inch)
Body	Brass	Gold plating, 3 μ inch (Non-magnetic nickel-phosphorus underplating, 80 μ inch)
Insulator	PTFE	

SMP Jack (Female) Termination, 2W DC-18GHz VSWR1.25

T-P25-18G2WA / 91

Mechanical Data

Coupling mechanisms	Snap-lock
Mating cycles	Smooth bore, Catchers mitt: ≥ 1000
Center contact captivation: axial	$\geq 7\text{ N}$
Engagement force	Smooth bore, Catchers mitt: $\leq 9\text{ N}$
Disengagement force	Smooth bore, Catchers mitt: $\geq 2.2\text{ N}$

Environmental Data

Temperature Range	-65°C to +155°C
Thermal shock	MIL-STD-202, Method 107, Condition B
Vibration	MIL-STD-202, Method 204, Condition B
Shock	MIL-STD-202, Method 213, Condition A
Moisture resistance	MIL-STD-202, Method 106
RoHS	compliant

Packing

Single or 100