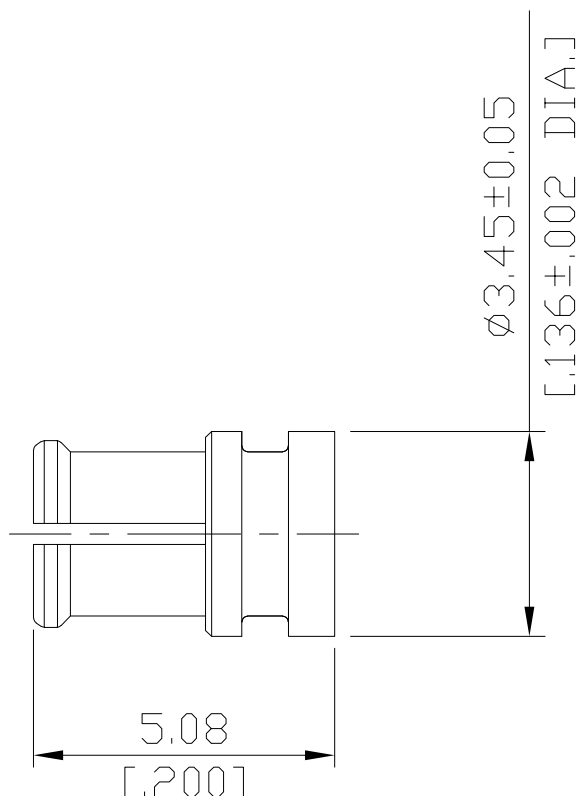




SMP Straight Protective Cap  
Female/Jack

SMP2A00-0508A/-9



**Note:** The cap will not touch the pin of the connector.

All dimensions are in mm [inch]

Tolerances according to DIN ISO 2768-mH

**Mechanical Data**

Coupling mechanisms

Snap-on

Weight

N/A

**Environmental Data**

Temperature range

-65°C to +165°C

RoHS

compliant

**Material And Plating**

Connector parts

Material

Plating

Body

Beryllium Copper

Gold plating(Nickel underplated)

**Packing**

Single or 100