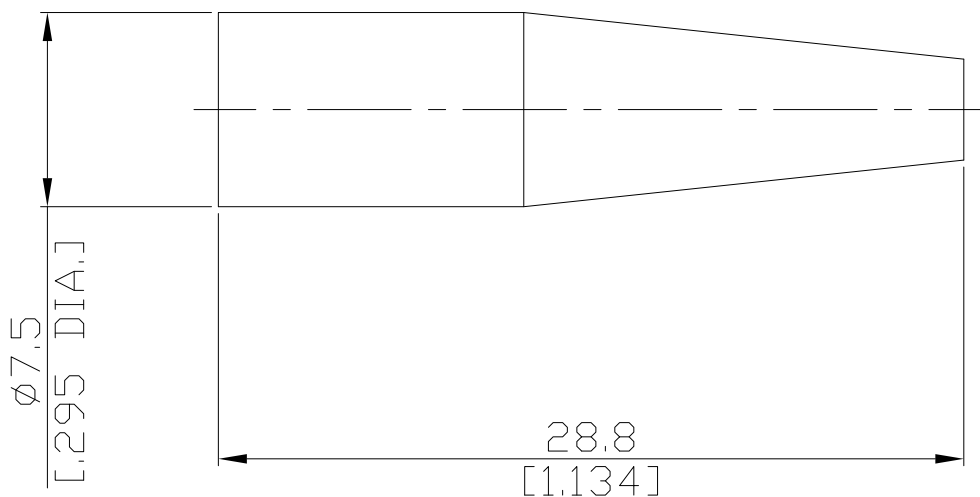


Taper Sleeve

SLEEVE-RG316A



All dimensions are in mm [inch]

Tolerances according to DIN ISO 2768-mH

**Environmental Data**

Temperature range

-55°C to +165°C

RoHS

compliant

**Material And Plating**

**Piece Parts**

Taper Sleeve

**Material**

Silicone Rubber

**Color**

Black

**Packing**

Single or 100