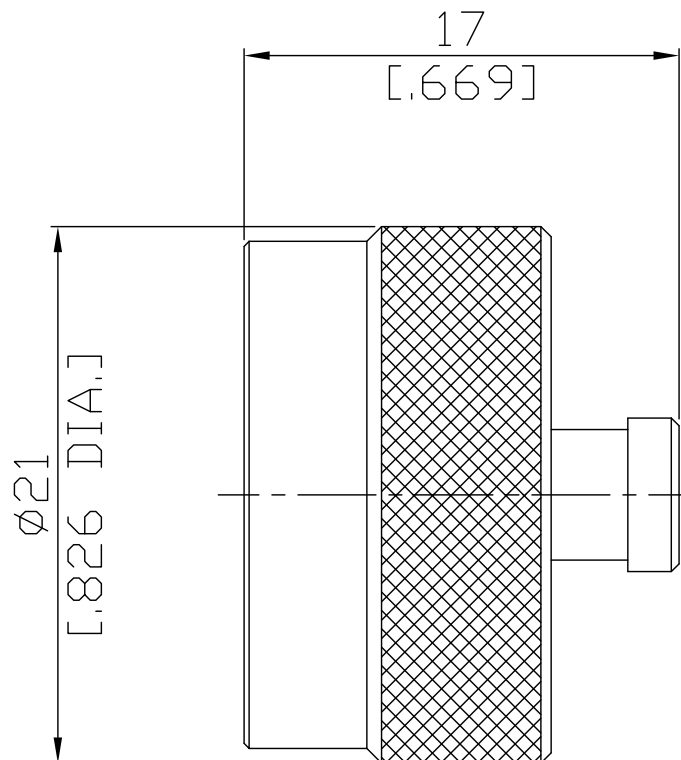


N (Male) Straight Protective Cap Plug

N1A00-1700A/- -4



All dimensions are in mm [inch]

Tolerances according to DIN ISO 2768-mH

Mechanical Data

Coupling mechanisms Screw-lock
Weight N/A

Environmental Data

Temperature range -65°C to +165°C
RoHS compliant

Material And Plating

Connector parts	Material	Plating
Gasket	Silicone Rubber	
Coupling nut	Brass	Copper-Tin-Zinc Alloy

Packing

Single or 100