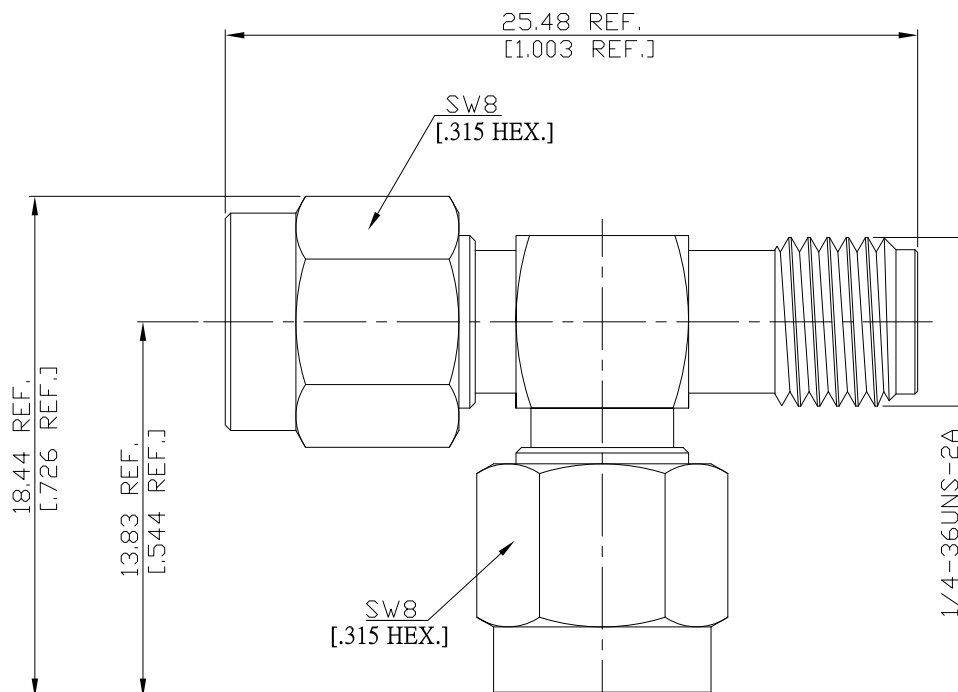


SMA plug (male) / SMA jack (female)  
T-Adaptor 2 plug , 1 jacks DC-12.4 GHz

**ADT-A1A1A25A / 133-133-13**



All dimensions are in mm [inch]

Tolerances according to DIN ISO 2768-mH

**Interface**

according to

IEC 60169-15; MIL-STD-348B/310

**Electrical Data**

Impedance	50 Ω
Frequency	DC to 12.4 GHz
Insulation resistance	≤ 5 mΩ
Center contact resistance	≤ 3 mΩ
Outer contact resistance	≤ 2 mΩ
Test voltage	1000 V rms
Working voltage	480 V rms
Power handling	≤ 200 W @ 2 GHz
RF-leakage	≥ 100 dB up to 1 GHz

**Material And Plating**

Piece Parts (SMA - male)	Material	Plating
Centre contact	Brass	Gold plating, 3 μinch (Non-magnetic nickel-phosphorus underplating, 80 μinch)
Body	Brass	Nickel
Insulator	PTFE	
Gasket	Silicone Rubber	
Coupling nut	Brass	Nickel
Piece Parts (SMA- female)	Material	Plating
Centre contact	Beryllium Copper	Gold plating, 3 μinch (Non-magnetic nickel-phosphorus underplating, 80 μinch)
Body	Brass	Nickel
Insulator	PTFE	

SMA plug (male) / SMA jack (female)  
T-Adaptor 2 plug , 1 jacks DC-12.4 GHz

**ADT-A1A1A25A / 133-133-13**

#### Mechanical Data

Coupling mechanisms	Screw-lock
Mating cycles	≥ 500
Coupling nut retention	≥ 270 N
Center contact captivation: axial	≥ 27 N
radial	≥ 3 Ncm
Coupling test torque	max. 1.7 Nm
Recommended torque	0.8 Nm to 1.1 Nm

#### Environmental Data

Temperature Range	-65°C to +155°C
Thermal shock	MIL-STD-202, Meth. 107, Cond. B
Corrosion	MIL-STD-202, Meth. 101, Cond. B
Vibration	MIL-STD-202, Meth. 204, Cond. D
Shock	MIL-STD-202, Meth. 213, Cond. I
Moisture resistance	MIL-STD-202, Meth. 106
RoHS	compliant

#### Packing

Single or 100