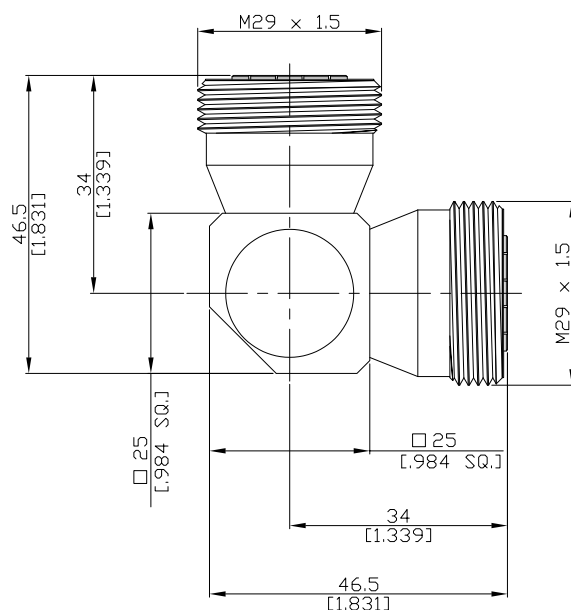


Low PIM L-adaptor jack/jack
7/16 jack (female) / 7/16 jack (female)

ADL-D2D25A/H4-H4-LP



All dimensions are in mm [inch]

Tolerances according to DIN ISO 2768-mH

Interface

According to IEC 61169-4

Electrical Data

Impedance 50 Ω
Frequency DC to 7.5 GHz
VSWR (Return Loss) ≤ 1.25 (≥ 19.08 dB)
PIM level ≥ 153 dBc

Mechanical Data

Coupling mechanisms Screw-lock
Weight 0.2586 kg

Environmental Data

Temperature range -65°C to +165°C
RoHS compliant

Material And Plating

Piece Parts (7/16)	Material	Plating
Centre contact	Phosphor Bronze	Gold plating (no Nickel underplating)
Body	Brass	Copper-Tin-Zinc Alloy
Insulator	PTFE	

Piece Parts (7/16)	Material	Plating
Centre contact	Phosphor Bronze	Gold plating (no Nickel underplating)
Body	Brass	Copper-Tin-Zinc Alloy
Insulator	PTFE	

Packing

Single or 100