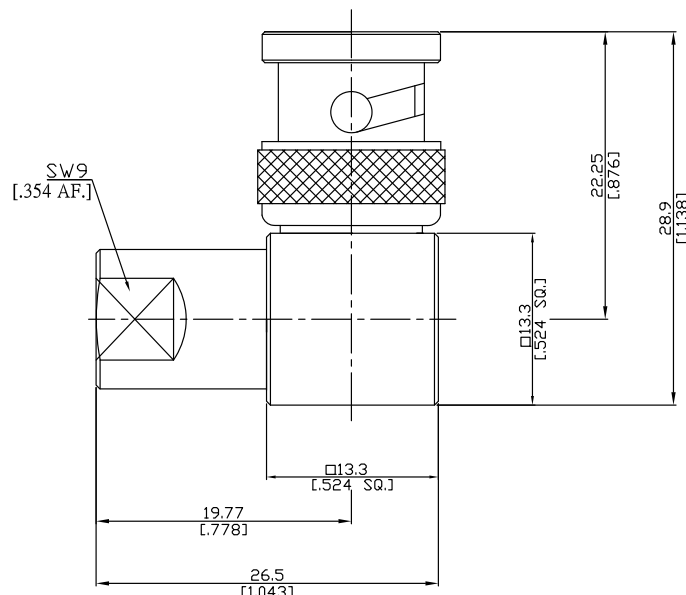


BNC plug (male) / FME plug (male) L-adaptor DC-2.5 GHz

ADL-B1E15A / 144-14



All dimensions are in mm [inch]

Tolerances according to DIN ISO 2768-mH

Interface

BNC according to

IEC 60169-8; MIL-STD-348B/301

FME according to

N/A

Electrical Data

Impedance

50 Ω

Frequency

DC to 2.5 GHz

Mechanical Data

Coupling mechanisms

BNC side

Bayonet

FME side

Screw-lock

Mating cycles

min. 500

min. 300

Environmental Data

Temperature Range

-65°C to +165°C

RoHS

compliant

Material And Plating

Piece Parts (BNC)	Material	Plating
Centre contact	Brass	Gold plating, 3 pinch (Non-magnetic nickel-phosphorus underplating, 80 pinch)
Body	Brass	Copper-Tin-Zinc Alloy
Insulator	PTFE	
Gasket	Silicone Rubber	
Coupling nut	Brass	Copper-Tin-Zinc Alloy
Piece Parts (FME)	Material	Plating
Centre contact	Brass	Gold plating, 3 pinch (Non-magnetic nickel-phosphorus underplating, 80 pinch)
Body	Brass	Copper-Tin-Zinc Alloy
Insulator	PTFE	

Packing

Singleor 100