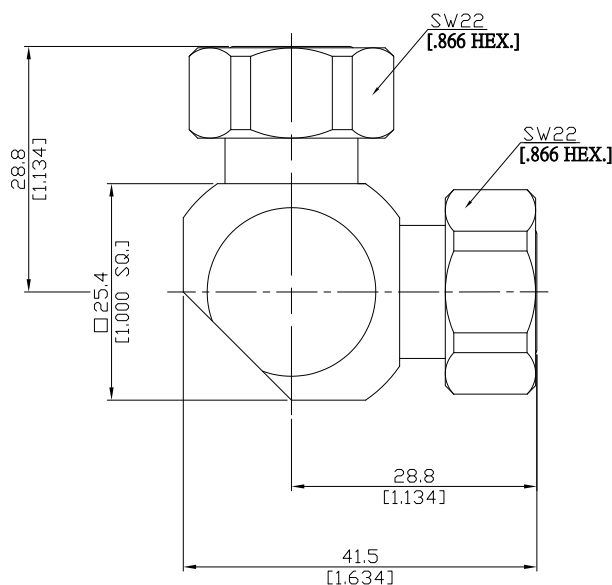


L-adaptor plug/plug  
 4.3/10 plug (male) / 4.3/10 plug (male)

ADL-43101431015A/144-144



All dimensions are in mm [inch]

Tolerances according to DIN ISO 2768-mH

### Interface

4.3/10 according to IEC 61169-54

### Electrical Data

 Impedance 50 Ω  
 Frequency DC to 6 GHz  
 VSWR (Return Loss) ≤ 1.25 (≥ 19.08 dB)  
 Insertion Loss ≤ 0.05 x √F (GHz) dB

### Mechanical Data

 Coupling mechanisms 4.3/10 (Screw-lock); 4.3/10 (Screw-lock)  
 Weight N/A

### Environmental Data

 Temperature range -40°C to +85°C  
 RoHS compliant

### Material And Plating

| Piece Parts (4.3/10) | Material        | Plating                                    |
|----------------------|-----------------|--|
| Centre contact       | Brass           | Gold plating (without Nickel underplating) |
| Body                 | Brass           | Copper-Tin-Zinc Alloy                      |
| Insulator            | PTFE            |  |
| Gasket               | Silicone Rubber |  |
| Coupling nut         | Brass           | Copper-Tin-Zinc Alloy                      |
| Piece Parts (4.3/10) | Material        | Plating                                    |
| Centre contact       | Brass           | Gold plating (without Nickel underplating) |
| Body                 | Brass           | Copper-Tin-Zinc Alloy                      |
| Insulator            | PTFE            |  |
| Gasket               | Silicone Rubber |  |
| Coupling nut         | Brass           | Copper-Tin-Zinc Alloy                      |

### Packing

Single or 100