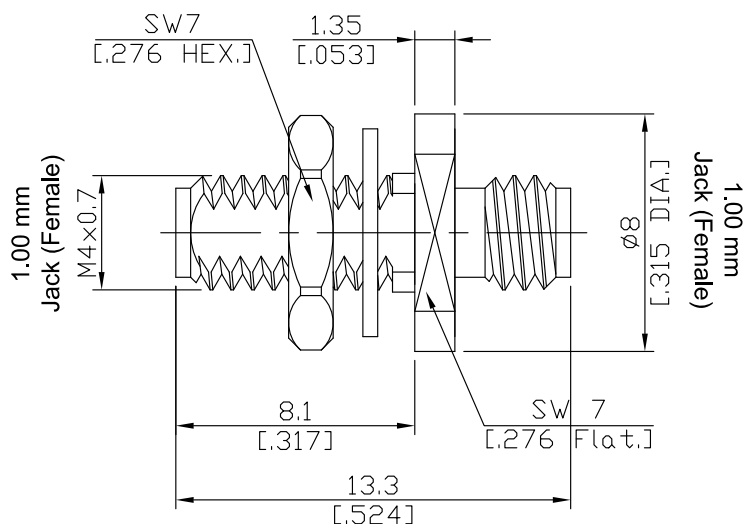
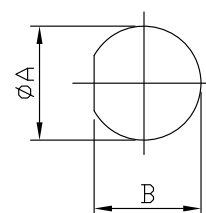


1.00mm Jack (Female) to 1.00mm Jack (Female) Bulkhead Adaptor
DC-110 GHz, VSWR ≤ 1.35

AD-W2W25A-BH / 9X-9X



Mounting Dimension



	mm		inch	
	Max.	Min.	Max.	Min.
A	4.2	4.1	.165	.161
B	3.7	3.6	.146	.142

All dimensions are in mm [inch]

Tolerances according to DIN ISO 2768-mH

Interface

According to

IEC 60169-31; IEEE Std 287

Electrical Data

Impedance	50 Ω
Frequency	DC to 110 GHz
VSWR (Return Loss)	≤ 1.35 (≥ 16.54 dB)
Insertion loss	≤ 0.6 dB
Insulation resistance	≥ 5 GΩ
Test voltage (at sea level)	500 V rms

Material And Plating

Piece Parts (1.00mm)	Material	Plating
Centre contact	Beryllium Copper	Gold plating
Body	Stainless Steel	Passivated
Insulator	PEI	
Gasket	Silicone Rubber	
Fastening nut	Stainless Steel	Passivated
Washer	Stainless Steel	Passivated
Piece Parts (1.00mm)	Material	Plating
Centre contact	Beryllium Copper	Gold plating
Body	Stainless Steel	Passivated
Insulator	PEI	

1.00mm Jack (Female) to 1.00mm Jack (Female) Bulkhead Adaptor
DC-110 GHz, VSWR ≤ 1.35

AD-W2W25A-BH / 9X-9X

Mechanical Data

Coupling mechanisms	Screw-lock
Mating cycles	≥ 500
Coupling test torque	0.70 Nm
Recommended torque	0.30 Nm to 0.41 Nm

Environmental Data

Temperature Range	-55°C to +125°C
Thermal shock	IEC 61169-1, Subclause 9.4.4
Corrosion	IEC 61169-1, Subclause 9.4.6
Vibration	IEC 61169-1, Subclause 9.3.3
Shock	IEC 61169-1, Subclause 9.3.14
Moisture resistance	IEC 61169-1, Subclause 9.4.3
RoHS	compliant

Packing

Single or 100