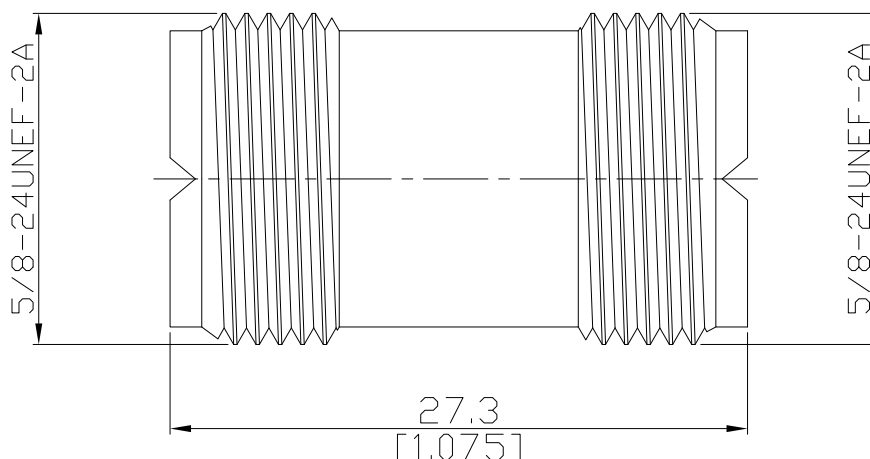


UHF jack (female) / UHF jack (female) Straight Adaptor  
DC-300 MHz

**AD-U2U25A / H3-H3**



All dimensions are in mm [inch]

Tolerances according to DIN ISO 2768-mH

**Interface**

according to

IEC 60169-12

**Electrical Data**

Impedance	non-constant
Frequency	DC to 300 MHz
Insulation resistance	$\leq 5 \text{ m}\Omega$
Center contact resistance	$\leq 5 \text{ m}\Omega$
Outer contact resistance	$\leq 5 \text{ m}\Omega$
Test voltage	2000 V rms
Working voltage	750 V rms
Power handling	400 W @ 300 MHz
Contact current	$\leq 10 \text{ A DC}$

**Material And Plating**

Piece Parts (UHF)	Material	Plating
Centre contact	Phosphor Bronze	Gold plating, 3 pinch (Non-magnetic nickel-phosphorus underplating, 80 pinch)
Body	Brass	Nickel
Insulator	PTFE	
Piece Parts (UHF)	Material	Plating
Centre contact	Phosphor Bronze	Gold plating, 3 pinch (Non-magnetic nickel-phosphorus underplating, 80 pinch)
Body	Brass	Nickel
Insulator	PTFE	

UHF jack (female) / UHF jack (female) Straight Adaptor  
DC-300 MHz

**AD-U2U25A / H3-H3**

**Mechanical Data**

Coupling mechanisms	Screw-lock
Mating cycles	≥ 500
Center contact captivation: axial	≥ 30 N

**Environmental Data**

Temperature Range	-65°C to +155°C
Thermal shock	MIL-STD-202, Method 107, Condition B
Corrosion	MIL-STD-202, Method 101, Condition B
Vibration	MIL-STD-202, Method 204, Condition B
Shock	MIL-STD-202, Method 213, Condition G
Moisture resistance	MIL-STD-202, Method 106
RoHS	compliant

**Packing**

Single or 100