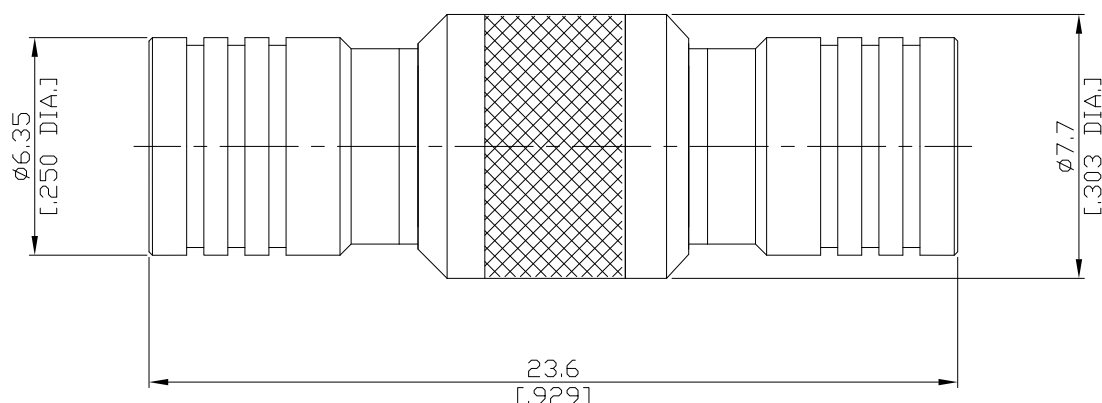


SMB plug (male) / SMB plug (male) Straight Adaptor
DC- 4 GHz, VSWR ≤ 1.35

AD-S1S15A / 911-911



All dimensions are in mm [inch]

Tolerances according to DIN ISO 2768-mH

Interface

according to

IEC 60169-10; MIL-STD-348B/311

Electrical Data

| | |
|---------------------------|----------------------------------|
| Impedance | 50 Ω |
| Frequency | DC to 4 GHz |
| VSWR (Return Loss) | ≤ 1.35 (≥ 16.5 dB) |
| Insertion Loss | ≤ 0.1 × √F (GHz) dB |
| Insulation resistance | ≥ 1 GΩ |
| Center contact resistance | ≤ 5 mΩ |
| Outer contact resistance | ≤ 2.5 mΩ |
| Test voltage | 750 V rms, 50 Hz, at sea level |
| Working voltage | ≤ 250 V rms, 50 Hz, at sea level |
| Contact current | 1.5 A DC typ. |
| RF-leakage | ≥ 55 dB up to 1 GHz |

Material And Plating

| Piece Parts (SMB) | Material | Plating |
|-------------------|------------------|--|
| Centre contact | Beryllium Copper | Gold plating, 3 pinch (Non-magnetic nickel-phosphorus underplating, 80 pinch) |
| Body | Brass | Gold plating, 3 pinch (Non-magnetic nickel-phosphorus underplating, 80 pinch) |
| Insulator | PTFE | |
| Coupling nut | Brass | Gold plating, 3 pinch (Non-magnetic nickel-phosphorus underplating, 80 pinch) |
| Piece Parts (SMB) | Material | Plating |
| Centre contact | Beryllium Copper | Gold plating, 3 pinch (Non-magnetic nickel-phosphorus underplating, 80 pinch) |
| Body | Brass | Gold plating, 3 pinch (Non-magnetic nickel-phosphorus underplating, 80 pinch) |
| Insulator | PTFE | |
| Coupling nut | Brass | Gold plating, 3 pinch (Non-magnetic nickel-phosphorus underplating, 80 pinch) |

SMB plug (male) / SMB plug (male) Straight Adaptor
DC- 4 GHz, VSWR ≤ 1.35

AD-S1S15A / 911-911

Mechanical Data

| | |
|-----------------------------------|-----------------------|
| Coupling mechanisms | Snap-lock |
| Mating cycles | ≥ 500 |
| Center contact captivation: axial | ≥ 10 N |
| Engagement force | ≤ 63 N |
| Disengagement force | 8 N min. to 63 N max. |

Environmental Data

| | |
|---------------------|---------------------------------|
| Temperature Range | -65°C to +155°C |
| Thermal shock | MIL-STD-202, Meth. 107, Cond. B |
| Vibration | MIL-STD-202, Meth. 204, Cond. B |
| Corrosion | MIL-STD-202, Meth. 101, Cond. B |
| Moisture resistance | MIL-STD-202, Meth. 106 |
| RoHS | compliant |

Packing

Single or 100