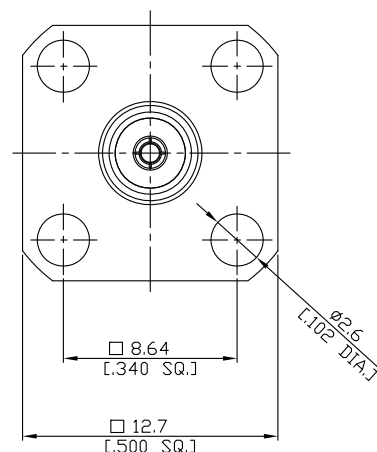
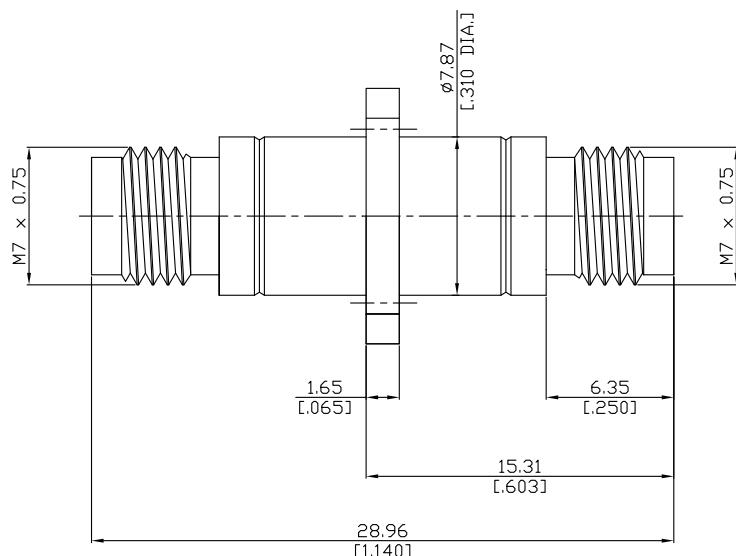


2.4mm jack (female) / 2.4mm jack (female)
Panel 4 Hole Flange Mount Adapter DC-50 GHz, VSWR ≤ 1.15

AD-Q2Q25A-PF / 9X-9X



All dimensions are in mm [inch]

Tolerances according to DIN ISO 2768-mH

Interface

according to

IEC 61169-40

Electrical Data

| | |
|--------------------------------|----------------------|
| Impedance | 50 Ω |
| Frequency | DC to 50 GHz |
| VSWR (Return Loss) | ≤ 1.15 (> 23.13 dB) |
| Insertion Loss | ≤ 0.05 × √F (GHz) dB |
| Insulation resistance | ≤ 5 mΩ |
| Test voltage (at sea level) | 500 V rms |
| Working voltage (at sea level) | 150 V rms |
| RF-leakage | ≥ 100 dB up to 1 GHz |

Material And Plating

| | | |
|---------------------|------------------|--|
| Piece Parts (2.4mm) | Material | Plating |
| Centre contact | Beryllium Copper | Gold plating, 3 μinch (Non-magnetic nickel-phosphorus underplating, 80 μinch) |
| Body | Stainless Steel | Passivated |
| Insulator | PEI | |
| Piece Parts (2.4mm) | Material | Plating |
| Centre contact | Beryllium Copper | Gold plating, 3 μinch (Non-magnetic nickel-phosphorus underplating, 80 μinch) |
| Body | Stainless Steel | Passivated |
| Insulator | PEI | |

2.4mm jack (female) / 2.4mm jack (female)
Panel 4 Hole Flange Mount Adapter DC-50 GHz, VSWR ≤ 1.15

AD-Q2Q25A-PF / 9X-9X

Mechanical Data

| | |
|----------------------------|--------------------|
| Coupling mechanisms | Screw-lock |
| Mating cycles | ≥ 500 |
| Center contact captivation | ≥ 20 N |
| Coupling test torque | 1.65 Nmm |
| Recommended torque | 0.80 Nm to 1.10 Nm |

Environmental Data

| | |
|---------------------|-------------------------------|
| Temperature Range | -65°C to +155°C |
| Thermal shock | IEC 61169-1, Subclause 9.4.4 |
| Corrosion | IEC 61169-1, Subclause 9.4.6 |
| Vibration | IEC 61169-1, Subclause 9.3.3 |
| Shock | IEC 61169-1, Subclause 9.3.14 |
| Moisture resistance | IEC 61169-1, Subclause 9.4.3 |
| RoHS | compliant |

Packing

Single or 100