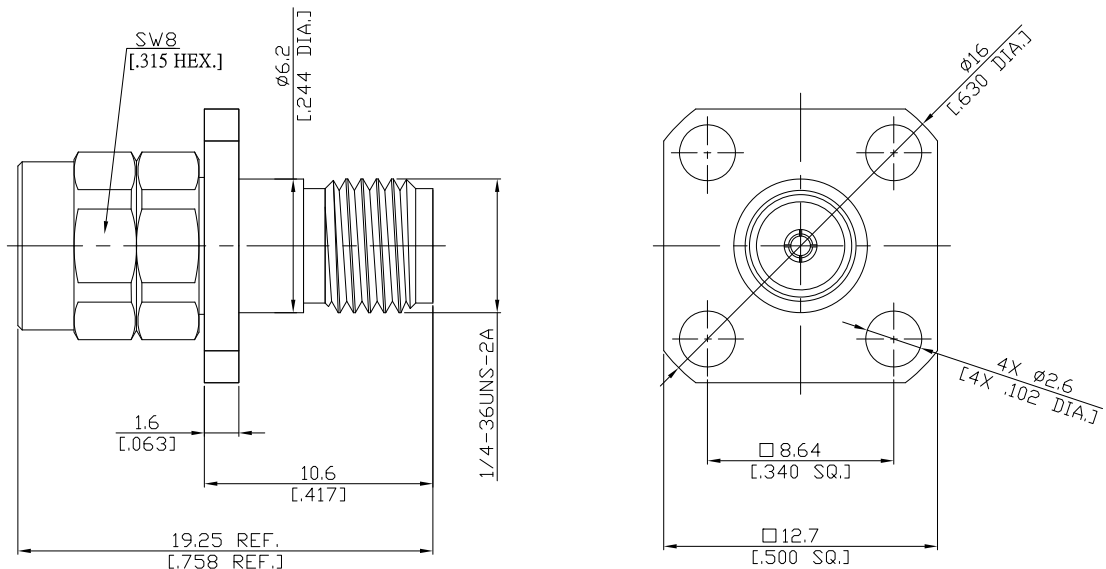


2.4mm Plug (Male) to 2.92mm Jack (Female)
Panel 4 Hole Flange Mount Adapter DC-40GHz VSWR1.15

AD-Q1K25A-PF / 9XX-9X



All dimensions are in mm [inch]

Tolerances according to DIN ISO 2768-mH

Interface

2.4mm according to

IEC 61169-40; MIL-STD-348B/324

2.92mm according to

IEC 61169-35

Electrical Data

Impedance

50 Ω

Frequency

DC to 40 GHz

VSWR (Return Loss)

≥ 1.15 (≥ 23.13 dB)

Insertion Loss

≤ 0.05 x √F (GHz) dB

Insulation resistance

≥ 5 GΩ

Test voltage

500 V rms

Working voltage

150 V rms

RF-leakage

≥ 100 dB up to 1 GHz

Material And Plating

Piece Parts (2.4mm)	Material	Plating
Centre contact	Beryllium Copper	Gold plating, 3 μinch (Non-magnetic nickel-phosphorus underplating, 80 μinch)
Body	Stainless Steel	Passivated
Insulator	PS	
Piece Parts (2.92mm)	Material	Plating
Centre contact	Beryllium Copper	Gold plating, 3 μinch (Non-magnetic nickel-phosphorus underplating, 80 μinch)
Body	Stainless Steel	Passivated
Insulator	PS	

2.4mm Plug (Male) to 2.92mm Jack (Female)
Panel 4 Hole Flange Mount Adapter DC-40GHz VSWR1.15

AD-Q1K25A-PF / 9XX-9X

Mechanical Data

	2.4mm side	2.92mm side
Coupling mechanisms	Screw-lock	Screw-lock
Mating cycles	≥ 500	≥ 500
Center contact captivation	≥ 20 N	≥ 20 N
Coupling test torque	1.65 Nm	1.70 Nm
Recommended torque	0.80 Nm to 1.10 Nm	0.80 Nm to 1.10 Nm

Environmental Data

Temperature Range	-60°C to +100°C
Thermal shock	MIL-STD-202, Meth. 107, Cond. B
Corrosion	MIL-STD-202, Meth. 101, Cond. B
Vibration	MIL-STD-202, Meth. 204, Cond. D
Shock	MIL-STD-202, Meth. 213, Cond. I
Moisture resistance	MIL-STD-202, Meth. 106
RoHS	compliant

Packing

Single or 100