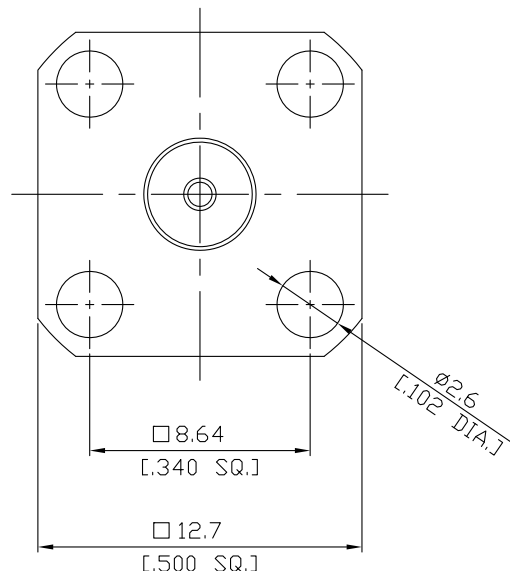
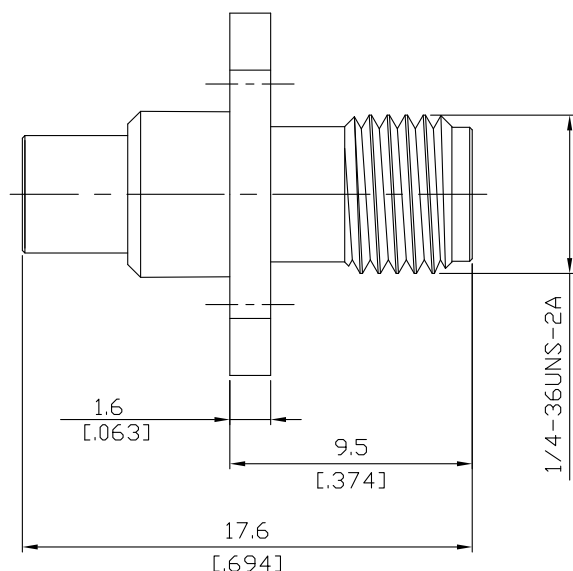


SMP Full Detent plug (male) / SMA jack (female)
Panel 4 Hole Flange Mount Adapter, DC-27 GHz, VSWR ≤ 1.20

AD-PF1A25A-PF / 9X-91



All dimensions are in mm [inch]

Tolerances according to DIN ISO 2768-mH

Interface

SMA according to

IEC 60169-15; MIL-STD-348B/310

SMP (Full detent) according to

MIL-STD-348B/326

Electrical Data

Impedance

50 Ω

Frequency

DC to 27 GHz

VSWR (Return Loss)

≤ 1.20 (≥ 20.83 dB)

Insertion loss

≤ 0.05 × √F (GHz) dB

Insulation resistance

≥ 5 GΩ

Center contact resistance

≤ 6.0 mΩ, SMP side;

≤ 3 mΩ, SMA side

Outer contact resistance

≤ 2.0 mΩ, SMP side;

≤ 2 mΩ, SMA side

Test voltage

500 V rms

Working voltage

335 V rms

Contact Current

1.2A DC max.

Material And Plating

Piece Parts (SMP)	Material	Plating
Centre contact	Beryllium Copper	Gold plating, 3 μinch (Non-magnetic nickel-phosphorus underplating, 80 μinch)
Body	Stainless Steel	Passivated
Insulator	PTFE	
Piece Parts (SMA)	Material	Plating
Centre contact	Beryllium Copper	Gold plating, 3 μinch (Non-magnetic nickel-phosphorus underplating, 80 μinch)
Body	Brass	Gold plating, 3 μinch (Non-magnetic nickel-phosphorus underplating, 80 μinch)
Insulator	PTFE	

SMP Full Detent plug (male) / SMA jack (female)
Panel 4 Hole Flange Mount Adapter, DC-27 GHz, VSWR ≤ 1.20

AD-PF1A25A-PF / 9X-91

Mechanical Data

	SMP(Snap-lock)	SMA(screw-on)
Mating cycles	≥ 100	min. 500
Center contact captivation: axial	≥ 7 N	≥ 27 N
Engagement force		N/A
- Full detent	≤ 68 N	
Disengagement force		N/A
- Full detent	≥ 22 N	
Coupling test torque	N/A	max. 1.7 Nm
Recommended torque	N/A	0.8 Nm to 1.1 Nm

Environmental Data

Temperature Range	-65°C to +155°C
Thermal shock	MIL-STD-202, Method 107, Condition B
Vibration	MIL-STD-202, Method 204, Condition B
Shock	MIL-STD-202, Method 213, Condition A
Moisture resistance	MIL-STD-202, Method 106
RoHS	compliant

Packing

Single or 100