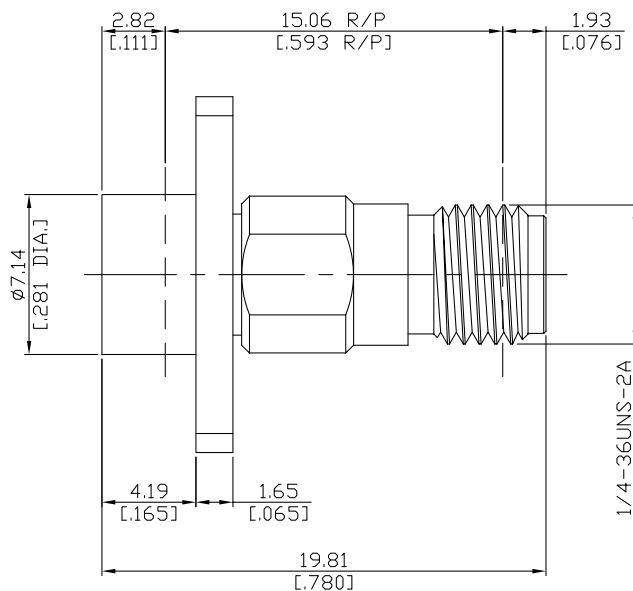
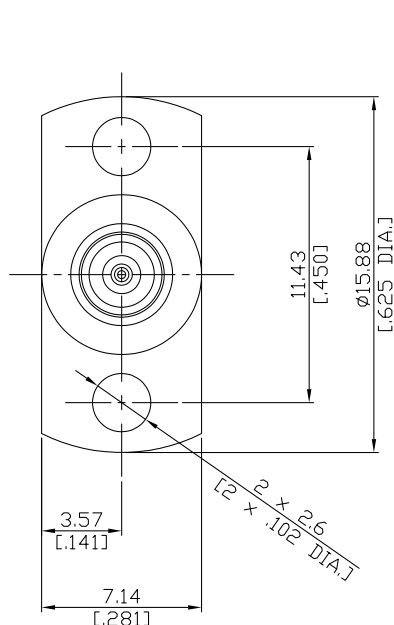


SMP Catchers mitt plug (male) / Precision SMA jack (female)
Panel 2 Hole Flange Mount Adapter, DC-27 GHz, VSWR ≤ 1.20

AD-PCM1PCA25A-PT / 9X-9X



All dimensions are in mm [inch]

Tolerances according to DIN ISO 2768-mH

Interface

Precision SMA according to
SMP (catchers mit) according to

IEC 60169-15; MIL-STD-348B/310
MIL-STD-348B/326

Electrical Data

Impedance	50 Ω
Frequency	DC to 27 GHz
VSWR (Return Loss)	≤ 1.20 (≥ 20.83 dB)
Insertion loss	≤ 0.05 x √F (GHz) dB
Insulation resistance	≥ 5 GΩ
Center contact resistance	≤ 6.0 mΩ, SMP side; ≤ 3 mΩ, SMA side
Outer contact resistance	≤ 2.0 mΩ, SMP side; ≤ 2 mΩ, SMA side
Test voltage	500 V rms
Working voltage	335 V rms
Contact Current	1.2A DC max.

Material And Plating

Piece Parts (SMP)	Material	Plating
Centre contact	Beryllium Copper	Gold plating, 3 pinch (Non-magnetic nickel-phosphorus underplating, 80 pinch)
Body	Stainless Steel	Passivated
Insulator	PTFE	
Piece Parts (SMA)	Material	Plating
Centre contact	Beryllium Copper	Gold plating, 3 pinch (Non-magnetic nickel-phosphorus underplating, 80 pinch)
Body	Stainless Steel	Passivated
Insulator	PTFE	

SMP Catchers mitt plug (male) / Precision SMA jack (female)
Panel 2 Hole Flange Mount Adapter, DC-27 GHz, VSWR ≤ 1.20

AD-PCM1PCA25A-PT / 9X-9X

Mechanical Data

	SMP side	Precision SMA side
Coupling mechanisms	Snap-On	Screw-lock
Mating cycles	min. 1000	min. 500
Center contact captivation: axial	≥ 7 N	≥ 27 N
Engagement force		N/A
- Catchers mitt	≤ 9 N	
Disengagement force		N/A
- Catchers mitt	≥ 2.2 N	
Coupling test torque	N/A	max. 1.7 Nm
Recommended torque	N/A	0.8 Nm to 1.1 Nm

Environmental Data

Temperature Range	-65°C to +155°C
Thermal shock	MIL-STD-202, Method 107, Condition B
Vibration	MIL-STD-202, Method 204, Condition B
Shock	MIL-STD-202, Method 213, Condition A
Moisture resistance	MIL-STD-202, Method 106
RoHS	compliant

Packing

Single or 100