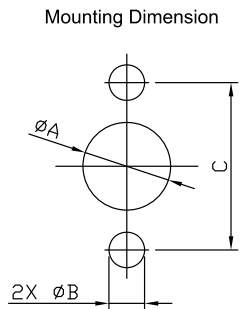
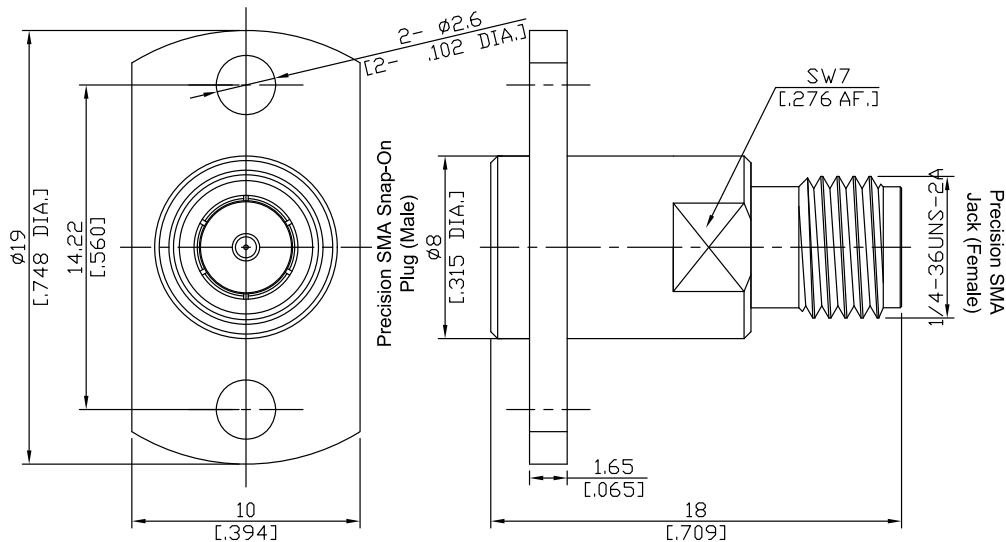


Precision SMA Snap-On Plug (Male) to Precision SMA Jack (Female),
2-Hole Flange Mount Adapter, DC-26.5 GHz, VSWR ≤ 1.2

AD-PCAQ1PCA25A-PT / 99X-9X



	mm		inch	
	Max.	Min.	Max.	Min.
A	8.10	8.05	.319	.317
B	2.7	2.6	.106	.102
C	14.27	14.17	.562	.558

All dimensions are in mm [inch]

Tolerances according to DIN ISO 2768-mH

Interface

According to

IEC 60169-15; CECC 22110; MIL-PRF-39012; MIL-STD-348B/310; EN 122110

Electrical Data

Impedance	50 Ω
Frequency	DC to 26.5 GHz
VSWR (Return Loss)	≤ 1.2 (≥ 20.83 dB)
Insertion loss	≤ 0.04 × √F (GHz) dB
Insulation resistance	≥ 5 GΩ
Center contact resistance	≤ 3 mΩ
Outer contact resistance	≤ 2 mΩ
Test voltage	1000 V rms
Working voltage	480 V rms

Material And Plating

Piece Parts (Precision SMA Snap-On)	Material	Plating
Centre contact	Beryllium Copper	Gold plating (Non-magnetic nickel-phosphorus underplating)
Body	Beryllium Copper	Gold plating (Non-magnetic nickel-phosphorus underplating)
Insulator	PTFE	
Gasket	Silicone Rubber	
Coupling nut	Stainless Steel	Passivated
Piece Parts (Precision SMA)	Material	Plating
Centre contact	Beryllium Copper	Gold plating (Non-magnetic nickel-phosphorus underplating)
Body	Stainless Steel	Passivated
Insulator	PTFE	

Precision SMA Snap-On Plug (Male) to Precision SMA Jack (Female),
2-Hole Flange Mount Adapter, DC-26.5 GHz, VSWR ≤ 1.2

AD-PCAQ1PCA25A-PT / 99X-9X

Mechanical Data

Coupling mechanisms	Precision SMA Snap-On side	Precision SMA side
Mating cycles	Snap-lock	Screw-lock
Center contact captivation	≥ 500	min. 500
	≥ 27 N	≥ 27 N

Environmental Data

Temperature range	-65°C to +165°C
Thermal shock	MIL-STD-202, Meth. 107, Cond. B
Corrosion	MIL-STD-202, Meth. 101, Cond. B
Vibration	MIL-STD-202, Meth. 204, Cond. D
Shock	MIL-STD-202, Meth. 213, Cond. I
Moisture resistance	MIL-STD-202, Meth. 106
RoHS	compliant

Packing

Single or 100