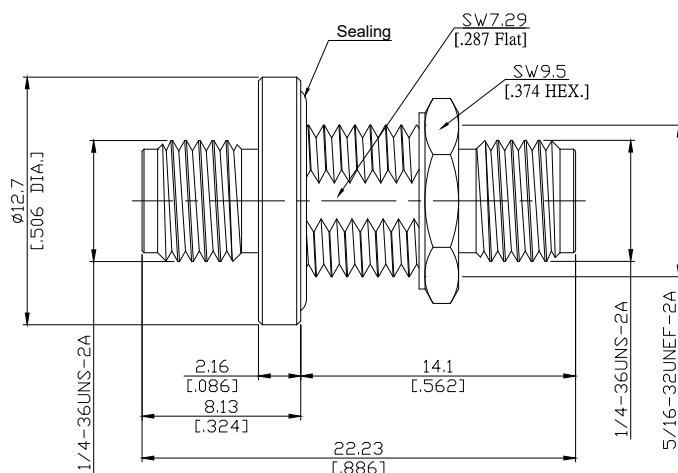
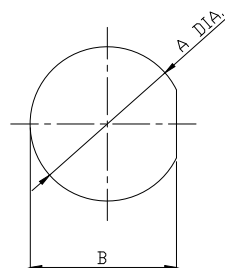


Precision SMA jack (female) / Precision SMA jack (female)  
DC-27 GHz, VSWR ≤ 1.15

**AD-PCA2PCA25C-BHS / 91-91**



**MOUNTING DIMENSIONS**



	mm		inch	
	MAX.	MIN.	MAX.	MIN.
<b>A</b>	7.9	7.85	.311	.309
<b>B</b>	7.4	7.35	.291	.289

All dimensions are in mm [inch]

Tolerances according to DIN ISO 2768-mH

**Interface**

according to

IEC 61169-8; MIL-STD-348B/301

**Electrical Data**

Impedance	50 Ω
Frequency	DC to 27 GHz
VSWR (Return Loss)	≤ 1.15 (≥ 23.13 dB)
Insertion Loss	≤ 0.05 × √F (GHz) dB
Insulation resistance	≥ 5 GΩ
Center contact resistance	≤ 3 mΩ
Outer contact resistance	≤ 2 mΩ
Test voltage	1000 V rms
Working voltage	480 V rms
Power handling (at 20 °C, sea level, VSWR 1.0)	≤ 200 W @ 2 GHz
RF-leakage	≥ 100 dB up to 1 GHz

**Material And Plating**

Piece Parts (Precision SMA)	Material	Plating
Centre contact	Beryllium Copper	Gold plating, 3 pinch (Non-magnetic nickel-phosphorus underplating, 80 pinch)
Body	Brass	Gold plating, 3 pinch (Non-magnetic nickel-phosphorus underplating, 80 pinch)
Insulator	PTFE	
Fastening nut	Brass	Gold plating, 3 pinch (Non-magnetic nickel-phosphorus underplating, 80 pinch)
Washer	Brass	Gold plating, 3 pinch (Non-magnetic nickel-phosphorus underplating, 80 pinch)
Piece Parts (Precision SMA)	Material	Plating
Centre contact	Beryllium Copper	Gold plating, 3 pinch (Non-magnetic nickel-phosphorus underplating, 80 pinch)
Body	Brass	Gold plating, 3 pinch (Non-magnetic nickel-phosphorus underplating, 80 pinch)
Insulator	PTFE	

Precision SMA jack (female) / Precision SMA jack (female)  
DC-27 GHz, VSWR ≤ 1.15

## AD-PCA2PCA25C-BHS / 91-91

### Mechanical Data

Coupling mechanisms	Screw-lock
Mating cycles	≥ 500
Center contact captivation: axial	≥ 27 N
radial	≥ 3 Ncm
Coupling test torque	≤ 1.7 Nm
Recommended torque	0.8 Nm to 1.1 Nm

### Environmental Data

Temperature Range	-65°C to +165°C
Thermal shock	MIL-STD-202, Meth. 107, Cond. B
Corrosion	MIL-STD-202, Meth. 101, Cond. B
Vibration	MIL-STD-202, Meth. 204, Cond. D
Shock	MIL-STD-202, Meth. 213, Cond. I
Moisture resistance	MIL-STD-202, Method 106
RoHS	compliant

### Packing

Single or 100