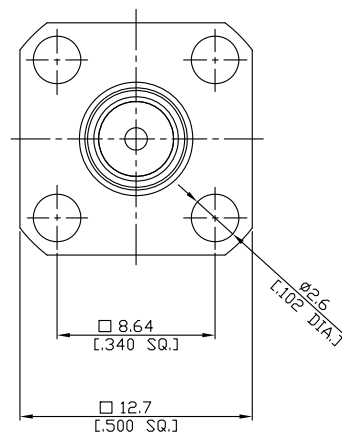
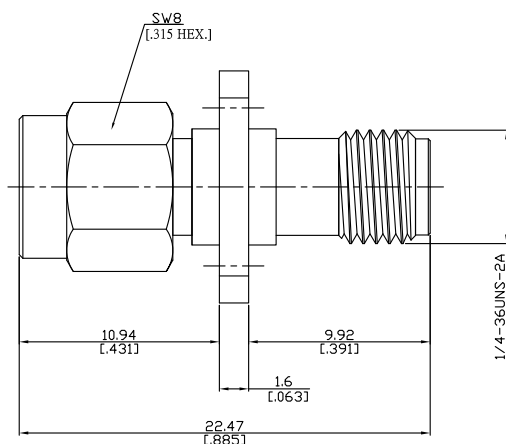




4 Hole Panel Flange Adaptor
2.92mm plug (male)/2.92mm jack (female)

AD-K1K25A-PF/9XX-9X



All dimensions are in mm [inch]

Tolerances according to DIN ISO 2768-mH

Interface

According to IEC 61169-35; MIL-C-39012; MIL-STD-348A/323

Electrical Data

Impedance 50 Ω
Frequency DC to 40 GHz
VSWR (Return Loss) ≤ 1.20 (≥ 20.8 dB)
Insertion Loss $\leq 0.05 \times \sqrt{F}$ (GHz) dB

Mechanical Data

Coupling mechanisms Screw-lock
Weight 0.0035 kg

Environmental Data

Temperature range -60°C to +100°C
RoHS compliant

Material And Plating

Piece Parts (RPC2.92)	Material	Plating
Centre contact	Beryllium Copper	Gold plating (Nickel underplated)
Body	Stainless Steel	Passivated
Insulator	PPO/PPE	
Coupling nut	Stainless Steel	Passivated
Piece Parts (RPC2.92)	Material	Plating
Centre contact	Beryllium Copper	Gold plating (Nickel underplated)
Body	Stainless Steel	Passivated
Insulator	PPO/PPE	

Packing

Single or 100

Related Document

Mounting Dimension MD10