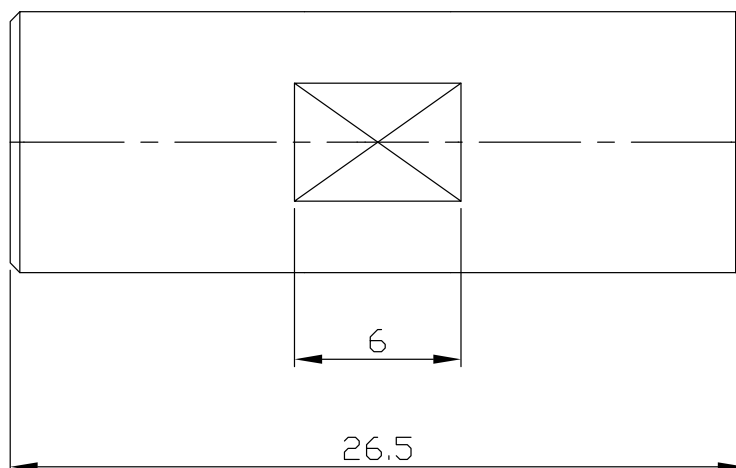
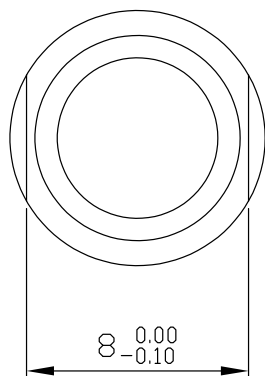




FME plug (male) / FME plug (male) Adaptors Straight DC-2.5GHz VSWR1.25

## AD-E1E15A / H4-H4



All dimensions are in mm [inch]

Tolerances according to DIN ISO 2768-mH

### Interface

According to

N/A

### Electrical Data

Impedance

50 Ω

Frequency

DC to 2.5 GHz

VSWR (Return Loss)

≤ 1.25 (≥ 19 dB)

Insertion Loss

≤ 0.1 x √F (GHz) dB

Insulation resistance

≥ 5 GΩ

Center contact resistance

≥ 10 mΩ

Outer contact resistance

≥ 5 mΩ

Test voltage

1000 V rms

Working voltage

500 V rms

### Material And Plating

Piece Parts (FME)	Material	Plating
Centre contact	Phosphor Bronze	Gold plating, 3 μinch (Non-magnetic nickel-phosphorus underplating, 80 μinch)
Body	Brass	Copper-Tin-Zinc Alloy
Insulator	PTFE	
Piece Parts (FME)	Material	Plating
Centre contact	Phosphor Bronze	Gold plating, 3 μinch (Non-magnetic nickel-phosphorus underplating, 80 μinch)
Body	Brass	Copper-Tin-Zinc Alloy
Insulator	PTFE	

FME plug (male) / FME plug (male) Adaptors Straight DC-2.5GHz VSWR1.25

## AD-E1E15A / H4-H4

### Mechanical Data

Coupling Mechanisms	Screw-lock
Mating Cycles	≥ 300
Coupling torque recommended	≥ 2 Nm

### Environmental Data

Temperature Range	-55°C to +125°C
Corrosion	MIL-STD-202, Method 101
Vibration	MIL-STD-202, Method 204
RoHS	compliant

### Packing

Single or 100