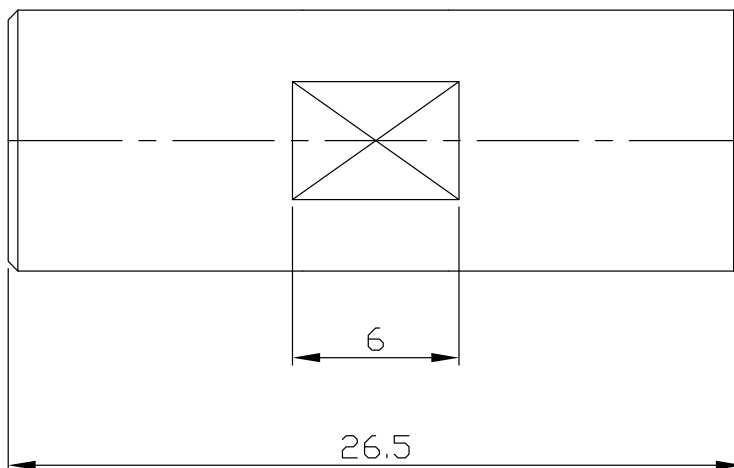
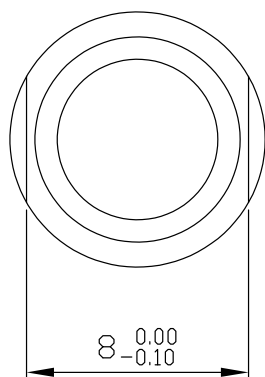


FME plug (male) / FME plug (male) Adaptors Straight DC-2.5GHz VSWR1.25

**AD-E1E15A / H3-H3**



All dimensions are in mm [inch]

Tolerances according to DIN ISO 2768-mH

**Interface**

According to

N/A

**Electrical Data**

Impedance	50 Ω
Frequency	DC to 2.5 GHz
VSWR (Return Loss)	≤ 1.25 (≥ 19 dB)
Insertion Loss	≤ 0.1 × √F (GHz) dB
Insulation resistance	≥ 5 GΩ
Center contact resistance	≥ 10 mΩ
Outer contact resistance	≥ 5 mΩ
Test voltage	1000 V rms
Working voltage	500 V rms

**Material And Plating**

Piece Parts (FME)	Material	Plating
Centre contact	Phosphor Bronze	Gold plating, 3 μinch (Non-magnetic nickel-phosphorus underplating, 80 μinch)
Body	Brass	Nickel
Insulator	PTFE	
Piece Parts (FME)	Material	Plating
Centre contact	Phosphor Bronze	Gold plating, 3 μinch (Non-magnetic nickel-phosphorus underplating, 80 μinch)
Body	Brass	Nickel
Insulator	PTFE	

FME plug (male) / FME plug (male) Adaptors Straight DC-2.5GHz VSWR1.25

## AD-E1E15A / H3-H3

### Mechanical Data

Coupling Mechanisms	Screw-lock
Mating Cycles	≥ 300
Coupling torque recommended	≥ 2 Nm

### Environmental Data

Temperature Range	-55°C to +125°C
Corrosion	MIL-STD-202, Method 101
Vibration	MIL-STD-202, Method 204
RoHS	compliant

### Packing

Single or 100