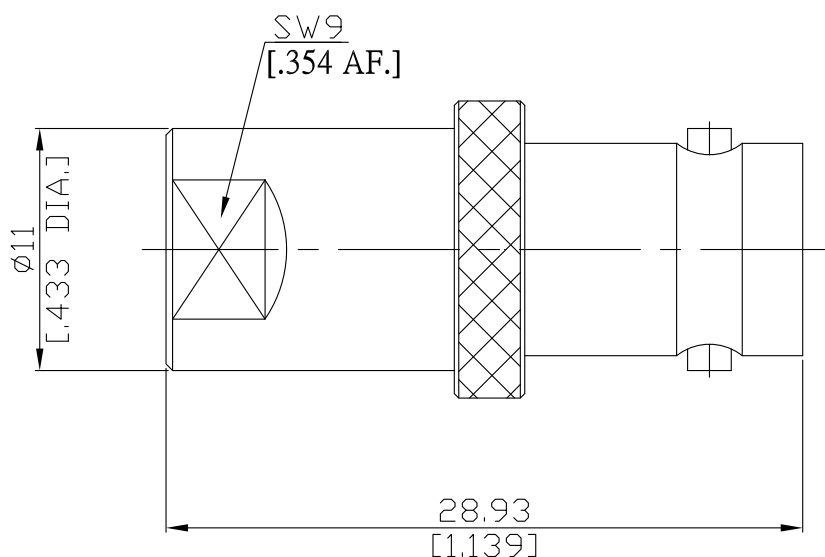


FME plug (male) / BNC jack (female)  
Straight adaptor DC- 2.5 GHz

**AD-E1B25A / 14-94**



All dimensions are in mm [inch]

Tolerances according to DIN ISO 2768-mH

**Interface**

FME according to

N/A

BNC according to

IEC 60169-8; MIL-STD-348B/301

**Electrical Data**

Impedance

50 Ω

Frequency

DC to 2.5 GHz

VSWR (Return Loss)

≤ 1.22 (≥ 20 dB)

Insertion loss

≤ 0.1 x √F (GHz) dB

Insulation resistance

≥ 5 GΩ

**Mechanical Data**

Mating cycles

FME side  
≥ 300

BNC side  
≥ 500

Center contact captivation axial:

N/A

≥ 27 N

Coupling torque recommended

≤ 2 Nm

N/A

**Environmental Data**

Temperature Range

-65°C to +165°C

RoHS

compliant

**Material And Plating**

Piece Parts (FME)	Material	Plating
Centre contact	Brass	Gold plating, 3 μinch (Non-magnetic nickel-phosphorus underplating, 80 μinch)
Body	Brass	Copper-Tin-Zinc Alloy
Insulator	PTFE	
Piece Parts (BNC)	Material	Plating
Centre contact	Beryllium Copper	Gold plating, 3 μinch (Non-magnetic nickel-phosphorus underplating, 80 μinch)
Body	Brass	Copper-Tin-Zinc Alloy
Insulator	PTFE	

**Packing**

Single or 100