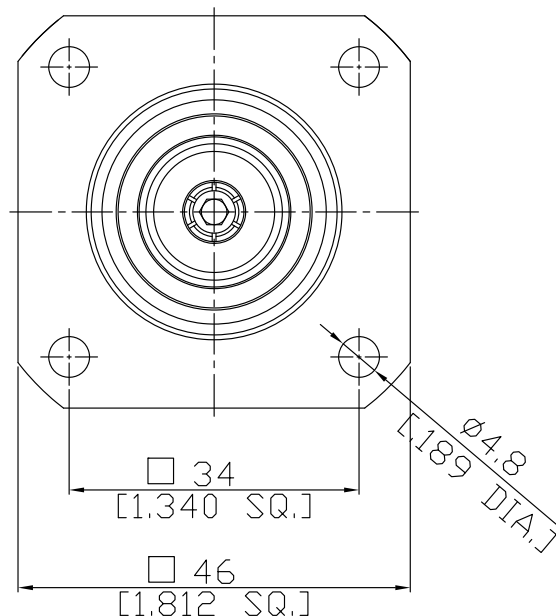
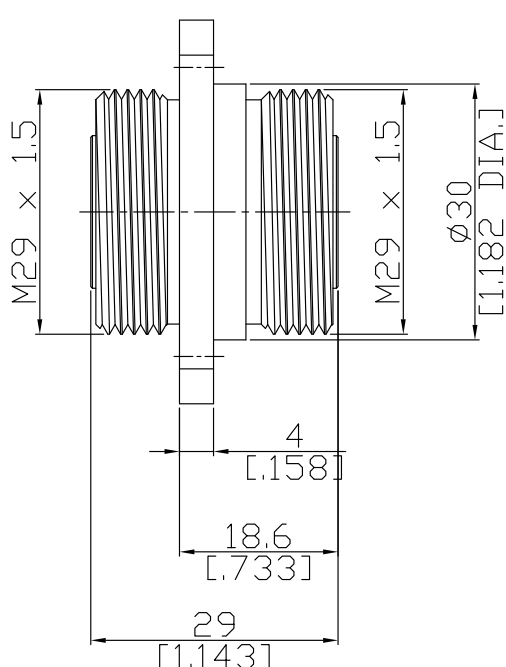


7/16 jack (female) / 7/16 jack (female)  
Panel 4 Hole Flange Mount Adapter DC-7.5GHz VSWR1.20

**AD-D2D25A-PF / G4-G4**



All dimensions are in mm [inch]

Tolerances according to DIN ISO 2768-mH

**Interface**

according to

IEC 61169-4; DIN 47223

**Electrical Data**

Impedance	50 Ω	
Frequency	DC to 7.5 GHz	
VSWR (Return Loss)	≥ 1.20 (≥ 20.8 dB)	
Insertion Loss	≤ 0.05 x √F (GHz) dB	
Insulation resistance	≥ 10 GΩ	
Center contact resistance	≤ 0.4 mΩ	
Outer contact resistance	≤ 1.5 mΩ	
Working voltage	500 V rms	
Power handling (at 20 °C, sea level, VSWR 1.0)	1800 W @ 1 GHz	800 W @ 4 GHz
RF-leakage	≥ 128 dB @ DC to 1 GHz	

**Material And Plating**

Piece Parts (7/16)	Material	Plating
Centre contact	Phosphor Bronze	Silver
Body	Brass	Copper-Tin-Zinc Alloy
Insulator	PTFE	
Piece Parts (7/16)	Material	Plating
Centre contact	Phosphor Bronze	Silver
Body	Brass	Copper-Tin-Zinc Alloy
Insulator	PTFE	

7/16 jack (female) / 7/16 jack (female)  
Panel 4 Hole Flange Mount Adapter DC-7.5GHz VSWR1.20

## AD-D2D25A-PF / G4-G4

### Mechanical Data

Coupling mechanisms	Screw-lock
Mating cycles	≥ 500
Center contact captivation: axial	≥ 200 N
radial	≥ 2 Ncm
Coupling torque (recommended)	25 to 30 Nm
Proof torque	≤ 35 Nm

### Environmental Data

Temperature Range	-65°C to +165°C
Rapid change of temperature	DIN EN 122190, Sub-clause 4.6.7
Corrosion resistance	DIN EN 122190, Sub-clause 4.6.10
Vibration	DIN EN 122190, Sub-clause 4.6.3
Climatic category	DIN EN 122190, Sub-clause 4.6.5 (55/155/56)
Damp heat	DIN EN 122190, Sub-clause 4.6.6
Degree of protection (mated pair)	IEC 60529, IP68 2.5 bar 1h
RoHS	compliant

### Packing

Single or 100