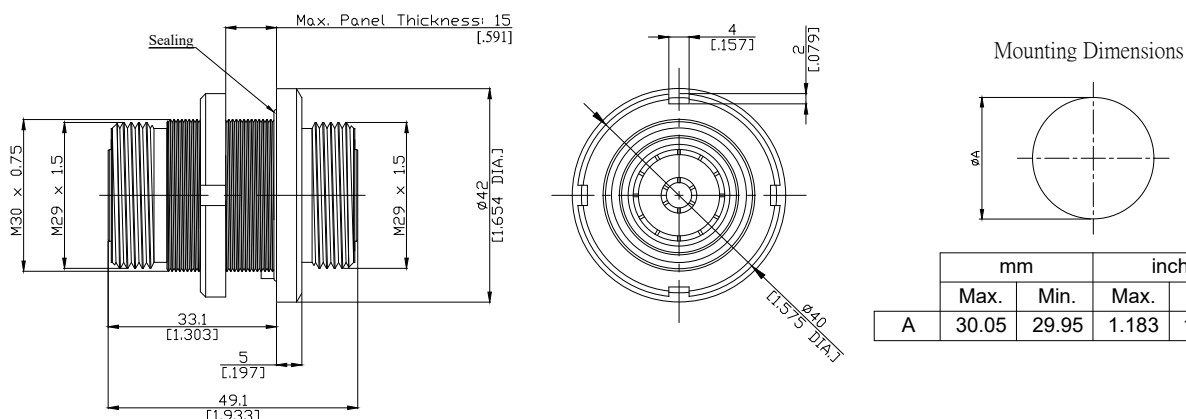


7/16 jack (female) / 7/16 jack (female) Bulkhead Adaptor
DC-7.5 GHz, VSWR ≤ 1.22

AD-D2D25A-BH / H4-H4



	mm		inch	
	Max.	Min.	Max.	Min.
A	30.05	29.95	1.183	1.179

All dimensions are in mm [inch]

Tolerances according to DIN ISO 2768-mH

Interface

according to

CECC 22190; IEC 61169-4

Electrical Data

Impedance

50 Ω

Frequency

DC to 7.5 GHz

VSWR (Return Loss)

≤ 1.22 (≥ 20 dB)

Insertion Loss

≤ 0.05 x √F (GHz) dB

Insulation resistance

≥ 10 GΩ

Center contact resistance

≤ 0.4 mΩ

Outer contact resistance

≤ 1.5 mΩ

Working voltage

500 V rms

Power handling (at 20 °C, sea level, VSWR 1.0)

1800 W @ 1 GHz

800 W @ 4 GHz

RF-leakage

≥ 128 dB @ DC to 1 GHz

Material And Plating

Piece Parts (7/16)	Material	Plating
Centre contact	Phosphor Bronze	Gold plating, 3 pinch (Non-magnetic nickel-phosphorus underplating, 80 pinch)
Body	Brass	Copper-Tin-Zinc Alloy
Insulator	PTFE	
Gasket	Silicone Rubber	
Fastening nut	Brass	Copper-Tin-Zinc Alloy
Washer	Brass	Copper-Tin-Zinc Alloy
Piece Parts (7/16)	Material	Plating
Centre contact	Phosphor Bronze	Gold plating, 3 pinch (Non-magnetic nickel-phosphorus underplating, 80 pinch)
Body	Brass	Copper-Tin-Zinc Alloy
Insulator	PTFE	

The facts and figures herein are carefully compiled to the best of our knowledge, but they are intended for general informational purposes only. In the effort to improve our products, we reserve the right to make changes judged to be necessary.

Rev.:
Date: JUL/16/2021
Rosnol RF/Microwave Technology Co., Ltd.
www.rosnol.com; info@rosnol.com
Phone: +886-3-463-5095 / Fax: +886-3-463-5952
N-CAGE Code: SFKK0 / ISO9001 Certified

Page

1/2

7/16 jack (female) / 7/16 jack (female) Bulkhead Adaptor
DC-7.5 GHz, VSWR ≤ 1.22

AD-D2D25A-BH / H4-H4

Mechanical Data

Coupling mechanisms	Screw-lock
Mating cycles	≥ 500
Center contact captivation: axial	≥ 200 N
radial	≥ 2 Ncm
Coupling torque (recommended)	25 to 30 Nm
Proof torque	≤ 35 Nm

Environmental Data

Temperature Range	-65°C to +165°C
Rapid change of temperature	DIN EN 122190, Sub-clause 4.6.7
Corrosion resistance	DIN EN 122190, Sub-clause 4.6.10
Vibration	DIN EN 122190, Sub-clause 4.6.3
Climatic category	DIN EN 122190, Sub-clause 4.6.5 (55/155/56)
Damp heat	DIN EN 122190, Sub-clause 4.6.6
Degree of protection (mated pair)	IEC 60529, IP68 2.5 bar 1h
RoHS	compliant

Packing

Single or 100