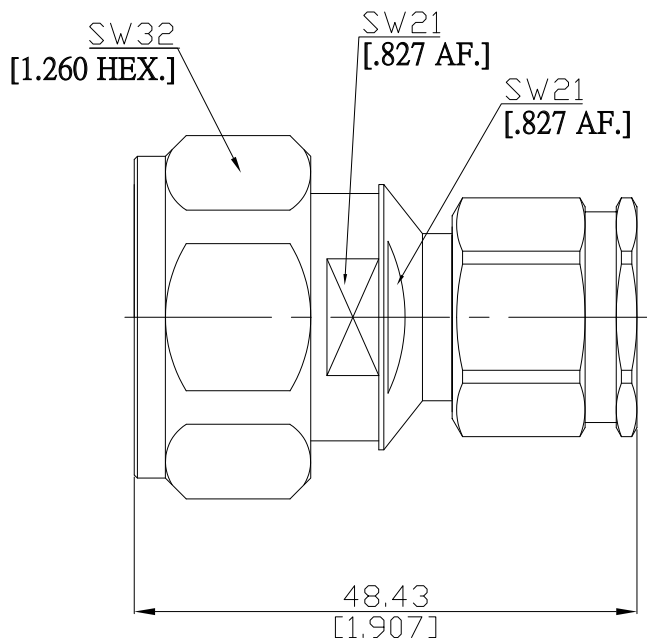


7/16 plug (male) / SC plug (male) Straight Adapter DC-7.5 GHz

**AD-D1SC15A / 144-144**



All dimensions are in mm [inch]

Tolerances according to DIN ISO 2768-mH

**Interface**

7/16 according to

IEC 61169-4

SC according to

MIL-C-39012; MIL-STD-348B/309

**Electrical Data**

Impedance

50 Ω

Frequency

DC to 7.5 GHz

**Mechanical Data**

Coupling mechanisms

7/16 side

SC side

Mating cycles

Screw-lock

Screw-lock

≥ 500

≥ 500

**Environmental Data**

Temperature range

-65°C to +165°C

RoHS

compliant

**Material And Plating**

Piece Parts (7/16)	Material	Plating
Centre contact	Brass	Gold plating, 3 pinch (Non-magnetic nickel-phosphorus underplating, 80 pinch)
Body	Brass	Copper-Tin-Zinc Alloy
Insulator	PTFE	
Coupling nut	Brass	Copper-Tin-Zinc Alloy
Piece Parts (SC)	Material	Plating
Centre contact	Brass	Gold plating, 3 pinch (Non-magnetic nickel-phosphorus underplating, 80 pinch)
Body	Brass	Copper-Tin-Zinc Alloy
Insulator	PTFE	
Coupling nut	Brass	Copper-Tin-Zinc Alloy

**Packing**

Single or 100