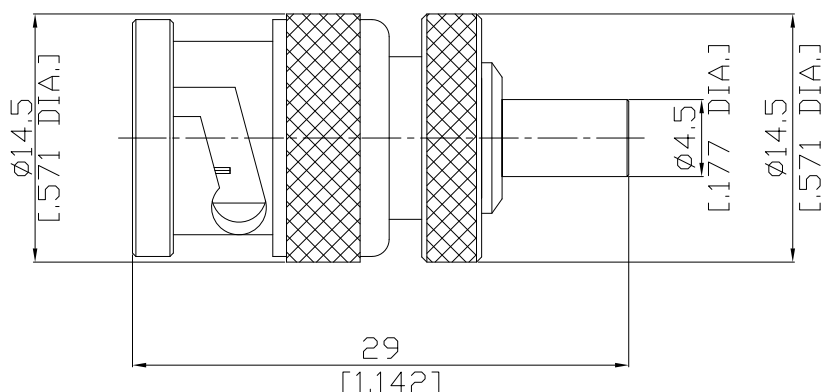


BNC plug (male) / MCX jack (female) Straight Adapter
DC-4 GHz VSWR 1.15

AD-B1M25A / H33-H1



All dimensions are in mm [inch]

Tolerances according to DIN ISO 2768-mH

Interface

BNC according to

IEC 60169-8; MIL-STD-348B/301

MCX according to

IEC 60169-36

Electrical Data

Impedance

50 Ω

Frequency

DC to 4 GHz

VSWR (Return Loss)

≤ 1.15 (≥ 23.1 dB)

Insertion Loss

≤ 0.05 x √F (GHz) dB

Mechanical Data

Coupling mechanisms

BNC side

MCX side

Mating cycles

Bayonet-lock

Snap-lock

Center contact captivation: axial

≥ 500

≥ 500

Disengagement force

≥ 27 N

≥ 28 N

Coupling test torque

N/A

8 N min. to 20 N max.

Recommended torque

N/A

N/A

N/A

N/A

Environmental Data

Temperature range

-65°C to +125°C

RoHS

compliant

Material And Plating

Piece Parts (BNC)	Material	Plating
Centre contact	Phosphor Bronze	Gold plating, 3 μinch (Non-magnetic nickel-phosphorus underplating, 80 μinch)
Body	Brass	Nickel
Insulator	PTFE	
Gasket	Silicone Rubber	
Coupling nut	Brass	Nickel
Piece Parts (MCX)	Material	Plating
Centre contact	Phosphor Bronze	Gold plating, 3 μinch (Non-magnetic nickel-phosphorus underplating, 80 μinch)
Body	Brass	Gold plating, 3 μinch (Non-magnetic nickel-phosphorus underplating, 80 μinch)
Insulator	PTFE	

Packing

Single or 100