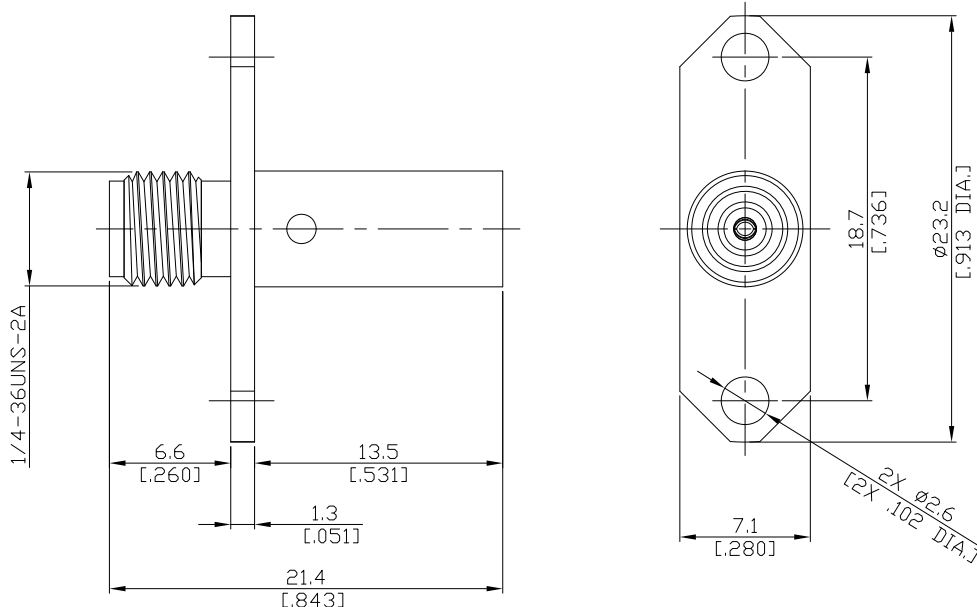


SMA jack (female) / BMC jack (female)  
2 Hole Flange Mount Adapter, DC-1 GHz

**AD-A2BC25A-PT / 9X-9X**



All dimensions are in mm [inch]

Tolerances according to DIN ISO 2768-mH

**Interface**

SMA according to IEC 60169-15; MIL-STD-348B/310

**Electrical Data**

Impedance 50 Ω  
Frequency DC to 1 GHz

**Material And Plating**

| Piece Parts (SMA) | Material         | Plating  |
|-------------------|------------------|--|
| Centre contact    | Beryllium Copper | Gold plating, 3 µinch<br>(Non-magnetic nickel-phosphorus underplating, 80 µinch) |
| Body              | Stainless Steel  | Passivated   |
| Insulator         | PTFE             |  |
| Piece Parts (BMC) | Material         | Plating  |
| Centre contact    | Beryllium Copper | Gold plating, 3 µinch<br>(Non-magnetic nickel-phosphorus underplating, 80 µinch) |
| Body              | Stainless Steel  | Passivated   |
| Insulator         | PTFE             |  |

**Mechanical Data**

|                     |           |          |
|---------------------|-----------|----------|
|                     | SMA side  | BMC side |
| Coupling mechanisms | Snap-lock | Slide-on |
| Mating cycles       | ≥ 500     | ≥ 500    |

**Environmental Data**

Temperature Range -65°C to +165°C  
RoHS compliant

**Packing**

Singleor 100