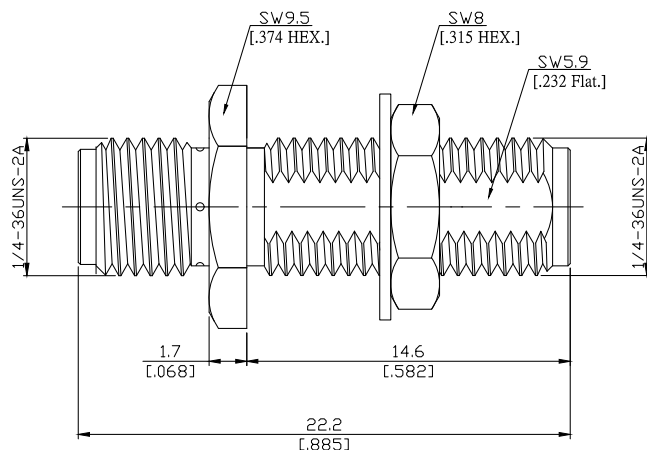
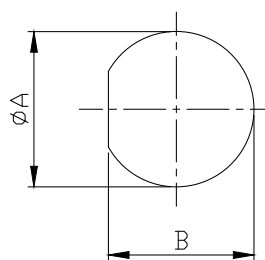


SMA jack (female) / SMA jack (female) Bulkhead adaptor  
DC-18 GHz, VSWR ≤ 1.20

**AD-A2A25K-BH / 91-91**



Mounting Dimensions



	mm		inch	
	Max.	Min.	Max.	Min.
A	6.6	6.5	0.260	0.255
B	6.1	6	0.240	0.236

All dimensions are in mm [inch]

Tolerances according to DIN ISO 2768-mH

**Interface**

according to

IEC 60169-15; MIL-STD-348B/310

**Electrical Data**

Impedance	50 Ω
Frequency	DC to 18 GHz
VSWR (Return Loss)	≤ 1.20 (≥ 20.83 dB)
Insertion Loss	≤ 0.05 × √F (GHz) dB
Insulation resistance	≥ 5 GΩ
Center contact resistance	≤ 3 mΩ
Outer contact resistance	≤ 2 mΩ
Test voltage	1000 V rms
Working voltage	480 V rms
Power handling	≤ 200 W @ 2 GHz
RF-leakage	≥ 100 dB up to 1 GHz

## SMA jack (female) / SMA jack (female) Bulkhead adaptor DC-18 GHz, VSWR ≤ 1.15

### AD-A2A25K-BH / 91-91

#### Material And Plating

Piece Parts (SMA)	Material	Plating
Centre contact	Beryllium Copper	Gold plating, 3 pinch (Non-magnetic nickel-phosphorus underplating, 80 pinch)
Body	Brass	Gold plating, 3 pinch (Non-magnetic nickel-phosphorus underplating, 80 pinch)
Insulator	PTFE	
Fastening nut	Brass	Gold plating, 3 pinch (Non-magnetic nickel-phosphorus underplating, 80 pinch)
Washer	Brass	Gold plating, 3 pinch (Non-magnetic nickel-phosphorus underplating, 80 pinch)
Piece Parts (SMA)	Material	Plating
Centre contact	Beryllium Copper	Gold plating, 3 pinch (Non-magnetic nickel-phosphorus underplating, 80 pinch)
Body	Brass	Gold plating, 3 pinch (Non-magnetic nickel-phosphorus underplating, 80 pinch)
Insulator	PTFE	

#### Mechanical Data

Coupling mechanisms	Screw-lock
Mating cycles	≥ 500
Center contact captivation: axial	≥ 27 N
radial	≥ 3 Ncm
Coupling test torque	≤ 1.7 Nm
Recommended torque	0.8 Nm to 1.1 Nm

#### Environmental Data

Temperature Range	-65°C to +155°C
Thermal shock	MIL-STD-202, Method 107, Condition B
Corrosion	MIL-STD-202, Method 101, Condition B
Vibration	MIL-STD-202, Method 204, Condition D
Shock	MIL-STD-202, Method 213, Condition I
Moisture resistance	MIL-STD-202, Method 106
RoHS	compliant

#### Packing

Singleor 100