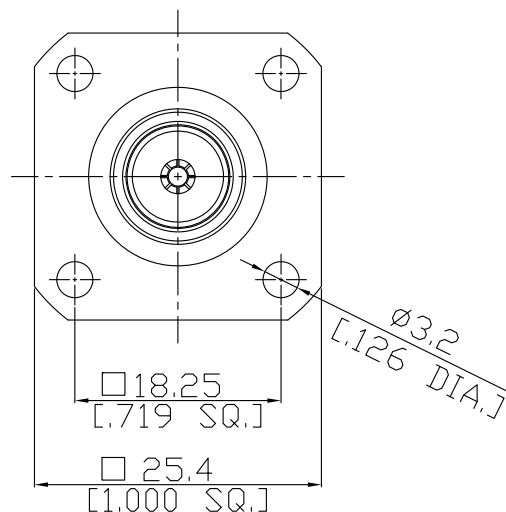
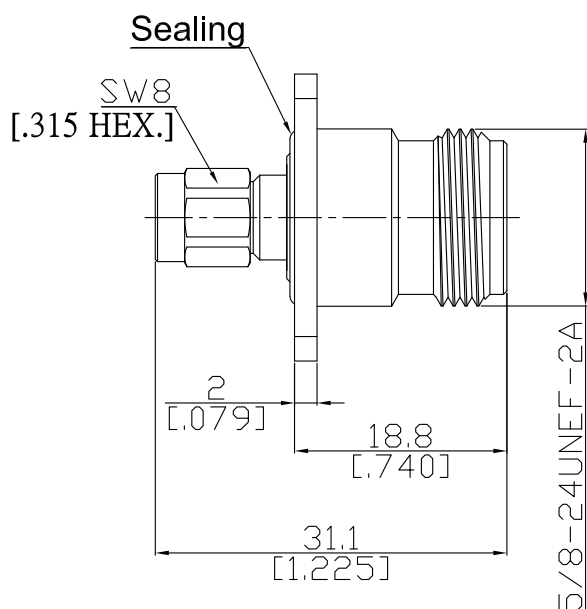


SMA Plug (male)/Precision N jack(female)  
4 Hole Panel Flange Adaptor, DC-18 GHz, VSWR ≤ 1.2

**AD-A1PCN25A-PF / H11-H4**



All dimensions are in mm [inch]

Tolerances according to DIN ISO 2768-mH

**Interface**

SMA according to

IEC 60169-15; MIL-STD-348B/310

Precision N according to

IEC 61169-16; MIL-STD-348B/402

**Electrical Data**

Impedance

50 Ω

Frequency

DC to 18 GHz

VSWR (Return Loss)

≤ 1.2 (≥ 20.83 dB)

Insertion loss

≤ 0.04 × √F (GHz) dB

Insulation resistance

≥ 5 GΩ

Test voltage (at sea level)

1000 V rms

Working voltage (at sea level)

480 V rms

RF-leakage

≥ 90 dB up to 1 GHz

**Material And Plating**

Piece Parts (SMA)	Material	Plating
Centre contact	Phosphor Bronze	Gold plating, 3 pinch (Non-magnetic nickel-phosphorus underplating, 80 pinch)
Body	Brass	Gold plating, 3 pinch (Non-magnetic nickel-phosphorus underplating, 80 pinch)
Insulator	PTFE	
Gasket	Silicone Rubber	
Coupling nut	Brass	Gold plating, 3 pinch (Non-magnetic nickel-phosphorus underplating, 80 pinch)
Piece Parts (Precision N)	Material	Plating
Centre contact	Phosphor Bronze	Gold plating, 3 pinch (Non-magnetic nickel-phosphorus underplating, 80 pinch)
Body	Brass	Copper-Tin-Zinc Alloy
Insulator	PTFE	
Gasket	Silicone Rubber	

SMA Plug (male)/Precision N jack(female)  
4 Hole Panel Flange Adaptor, DC-18 GHz, VSWR ≤ 1.2

# AD-A1PCN25A-PF / H11-H4

## Mechanical Data

Coupling mechanisms

Mating cycles

Center contact captivation: axial

Coupling test torque

Recommended torque

SMA side

Screw-lock

min. 500

≥ 28 N

max. 1.7 Nm

0.80 Nm to 1.10 Nm

Precision N side

Screw-lock

min. 500

≥ 28 N

max. 1.7 Nm

0.70 Nm to 1.10 Nm

## Environmental Data

Temperature Range

Thermal shock

Corrosion

Vibration

Shock

Moisture resistance

RoHS

-65°C to +165°C

IEC 61169-1, Subclause 9.4.4

IEC 61169-1, Subclause 9.4.6

IEC 61169-1, Subclause 9.3.3

IEC 61169-1, Subclause 9.3.14

IEC 61169-1, Subclause 9.4.3

compliant

## Packing

Single or 100