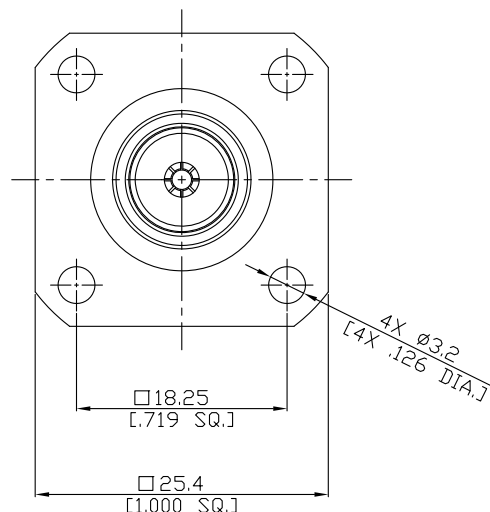
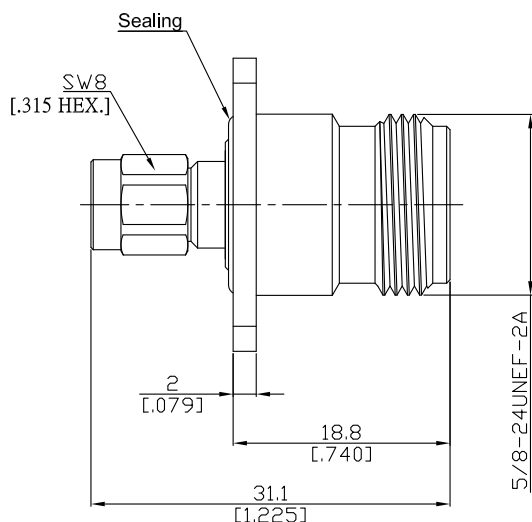


SMA male (male) / N jack (female)
Panel 4 Hole Flange Mount Adapter, DC-11 GHz, VSWR ≤ 1.15

AD-A1N25A-PF / H41-H4



All dimensions are in mm [inch]

Tolerances according to DIN ISO 2768-mH

Interface

SMA according to

IEC 60169-15; MIL-STD-348B/310

N according to

IEC 60169-16; MIL-STD-348B/304

Electrical Data

Impedance

50 Ω

Frequency

DC to 11 GHz

VSWR (Return Loss)

≤ 1.15 (≥ 23.1 dB)

Insertion loss

≤ 0.04 × √F (GHz) dB

Insulation resistance

≥ 5 GΩ

Center contact resistance

≤ 3 mΩ, SMA side

≤ 1 mΩ, N side

Outer contact resistance

≤ 2 mΩ, SMA side

≤ 0.25 mΩ, N side

Test voltage

1000 V rms

Working voltage

480 V rms

Power handling (at 20 °C, sea level, VSWR 1.0)

≤ 200 W @ 2 GHz

RF-leakage

≥ 100 dB up to 1 GHz

Material And Plating

Piece Parts (SMA)	Material	Plating
Centre contact	Phosphor Bronze	Gold plating, 3 pinch (Non-magnetic nickel-phosphorus underplating, 80 pinch)
Body	Brass	Copper-Tin-Zinc Alloy
Insulator	PTFE	
Gasket	Silicone Rubber	
Coupling nut	Brass	Gold plating, 3 pinch (Non-magnetic nickel-phosphorus underplating, 80 pinch)
Piece Parts (N)	Material	Plating
Centre contact	Phosphor Bronze	Gold plating, 3 pinch (Non-magnetic nickel-phosphorus underplating, 80 pinch)
Body	Brass	Copper-Tin-Zinc Alloy
Insulator	PTFE	
Gasket	Silicone Rubber	

SMA male (male) / N jack (female)
Panel 4 Hole Flange Mount Adapter, DC-11 GHz, VSWR ≤ 1.15

AD-A1N25A-PF / H41-H4

Mechanical Data

	SMA Side	N Side
Coupling mechanisms	Screw-lock	Screw-lock
Mating Cycles	≥ 500	≥ 500
Center Contact Captivation axial	≥ 28 N	≥ 28 N
Coupling Test Torque	1.7 Nm max.	1.70 Nm max.
Recommended Torque	0.9 Nm	1.36 Nm

Environmental Data

Temperature Range	-55°C to +155°C
Thermal shock	MIL-STD-202, Method 107, Condition B
Corrosion	MIL-STD-202, Method 101, Condition B
Vibration	MIL-STD-202, Method 204, Condition D
Shock	MIL-STD-202, Method 213, Condition I
Moisture Resistance	MIL-STD-202, Method 106
RoHS	compliant

Weight

N/A

Packing

Single or 100