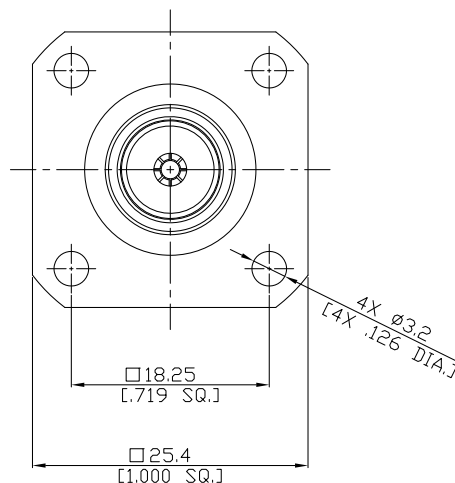
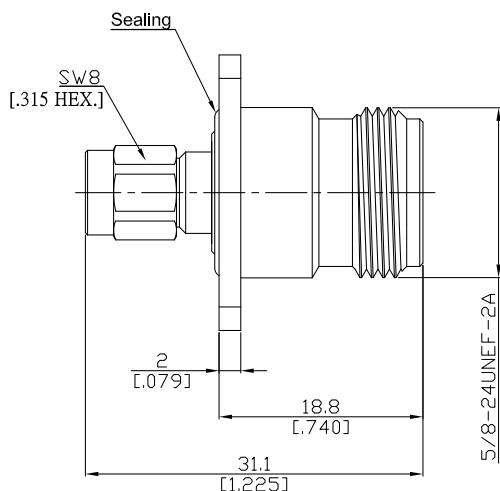


SMA male (male) / N jack (female)  
Panel 4 Hole Flange Mount Adapter, DC-11 GHz, VSWR ≤ 1.15

**AD-A1N25A-PF / H11-H4**



All dimensions are in mm [inch]

Tolerances according to DIN ISO 2768-mH

**Interface**

SMA according to

IEC 60169-15; MIL-STD-348B/310

N according to

IEC 60169-16; MIL-STD-348B/304

**Electrical Data**

Impedance

50 Ω

Frequency

DC to 11 GHz

VSWR (Return Loss)

≤ 1.15 (≥ 23.1 dB)

Insertion loss

≤ 0.04 x √F (GHz) dB

Insulation resistance

≥ 5 GΩ

Center contact resistance

≤ 3 mΩ, SMA side

≤ 1 mΩ, N side

Outer contact resistance

≤ 2 mΩ, SMA side

≤ 0.25 mΩ, N side

Test voltage

1000 V rms

Working voltage

480 V rms

Power handling (at 20 °C, sea level, VSWR 1.0)

≤ 200 W @ 2 GHz

RF-leakage

≥ 100 dB up to 1 GHz

**Material And Plating**

Piece Parts (SMA)	Material	Plating
Centre contact	Phosphor Bronze	Gold plating, 3 μinch (Non-magnetic nickel-phosphorus underplating, 80 μinch)
Body	Brass	Gold plating, 3 μinch (Non-magnetic nickel-phosphorus underplating, 80 μinch)
Insulator	PTFE	
Gasket	Silicone Rubber	
Coupling nut	Brass	Gold plating, 3 μinch (Non-magnetic nickel-phosphorus underplating, 80 μinch)
Piece Parts (N)	Material	Plating
Centre contact	Brass	Gold plating, 3 μinch (Non-magnetic nickel-phosphorus underplating, 80 μinch)
Body	Brass	Copper-Tin-Zinc Alloy
Insulator	PTFE	
Gasket	Silicone Rubber	
Coupling nut	Brass	Copper-Tin-Zinc Alloy

The facts and figures herein are carefully compiled to the best of our knowledge, but they are intended for general informational purposes only. In the effort to improve our products, we reserve the right to make changes judged to be necessary.

Rev.:  
Date: JUL/16/2021

Rosnol RF/Microwave Technology Co., Ltd.  
www.rosnol.com; info@rosnol.com  
Phone: +886-3-463-5095 / Fax: +886-3-463-5952  
N-CAGE Code: SFKK0 / ISO9001 Certified

Page

1/2

SMA male (male) / N jack (female)  
Panel 4 Hole Flange Mount Adapter, DC-11 GHz, VSWR ≤ 1.15

**AD-A1N25A-PF / H11-H4**

**Mechanical Data**

	SMA Side	N Side
Coupling mechanisms	Screw-lock	Screw-lock
Mating Cycles	≥ 500	≥ 500
Coupling nut retention	≥ 270 N	≥ 450N
Center Contact Captivation axial	≥ 28 N	≥ 28 N
Coupling Test Torque	1.7 Nm max.	1.70 Nm max.
Recommended Torque	0.8 Nm to 1.1 Nm	0.7 Nm to 1.1 Nm

**Environmental Data**

Temperature Range	-55°C to +155°C
Thermal shock	MIL-STD-202, Method 107, Condition B
Corrosion	MIL-STD-202, Method 101, Condition B
Vibration	MIL-STD-202, Method 204, Condition D
Shock	MIL-STD-202, Method 213, Condition I
Moisture Resistance	MIL-STD-202, Method 106
RoHS	compliant

**Weight**

N/A

**Packing**

Single or 100