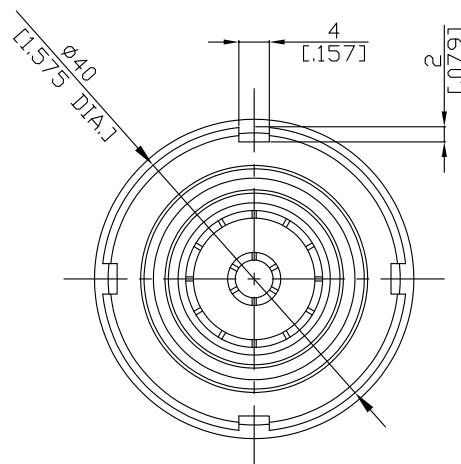
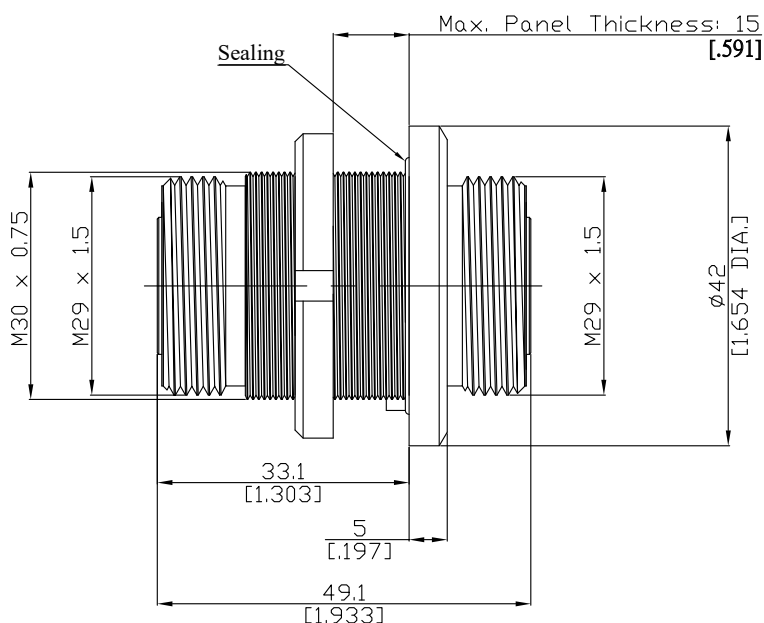


4.3-10 jack (female) / 4.3-10 jack (female) Bulkhead Adaptor
DC-6 GHz, VSWR ≤ 1.15

AD-43102431025A-BH / H4-H4



All dimensions are in mm [inch]

Tolerances according to DIN ISO 2768-mH

Interface

according to

IEC 61169-54

Electrical Data

Impedance	50 Ω
Frequency	DC to 6 GHz
VSWR (Return Loss)	≤ 1.15 (≥ 23.13 dB)
Insertion Loss	≤ 0.05 × √F (GHz) dB
Insulation resistance	≥ 5 GΩ
Center contact resistance	≤ 1.0 mΩ
Outer contact resistance	≤ 1.0 mΩ
Test voltage	2500 V rms
Working voltage	500 V rms
Power handling (at 90 °C, altitude 3000m)	500 W @ 2.0 GHz

Material And Plating

Piece Parts (4.3-10)	Material	Plating
Centre contact	Phosphor Bronze	Gold plating, 3 pinch (Non-magnetic nickel-phosphorus underplating, 80 pinch)
Body	Brass	Copper-Tin-Zinc Alloy
Insulator	PTFE	
Gasket	Silicone Rubber	
Fastening nut	Brass	Copper-Tin-Zinc Alloy
Washer	Brass	Copper-Tin-Zinc Alloy
Piece Parts (4.3-10)	Material	Plating
Centre contact	Phosphor Bronze	Gold plating, 3 pinch (Non-magnetic nickel-phosphorus underplating, 80 pinch)
Body	Brass	Copper-Tin-Zinc Alloy
Insulator	PTFE	

4.3-10 jack (female) / 4.3-10 jack (female) Bulkhead Adaptor
DC-6 GHz, VSWR ≤ 1.15

AD-43102431025A-BH / H4-H4

Mechanical Data

Coupling mechanisms	Screw-lock
Mating cycles	≥ 100
Recommended torque	5 Nm
IP rating	IP68

Environmental Data

Temperature Range	-65°C to +165°C
Thermal shock	IEC 61169-1 9.4.4
Corrosion resistance	ISO 21207 method B
Vibration	IEC 61169-1 9.3.3 and IEC 60068-2-64
Shock	IEC 61169-1 9.3.14
Degree of protection (mated pair)	IEC 60529, IP68 1 h / 25 m
RoHS	compliant

Packing

Single or 100