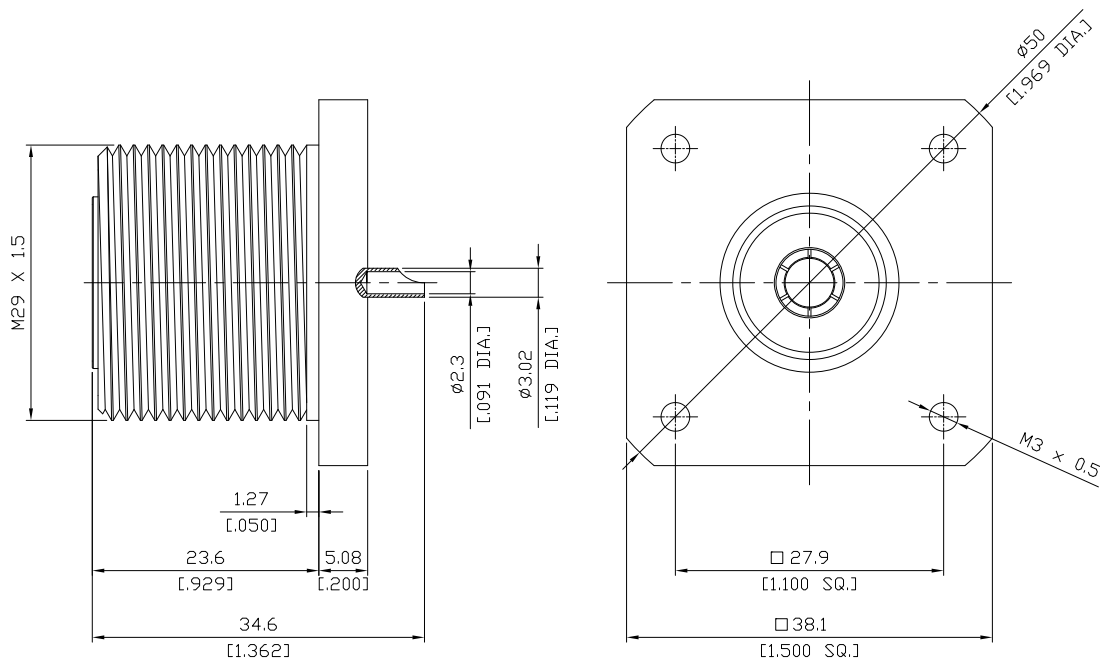


7/16 Jack (female) Panel Connector Solder Attachment 4 Hole Flange Mount  
Solder Cup Terminal, 27.9mm (1.100 inch) Hole Spacing DC-7.5 GHz

**716-2GFB50-3460A / G4**



All dimensions are in mm [inch]

Tolerances according to DIN ISO 2768-mH

**Interface**

according to

IEC 61169-4

**Electrical Data**

Impedance

50 Ω

Frequency

DC to 7.5 GHz

Dielectric withstanding voltage

4000 VRMS, min.

**Mechanical Data**

Coupling mechanisms

Screw-lock

Durability

500 cycles min.

Centre Contact

Soldered

Terminal Type

Solder Cup

Captivated Type

Mechanical

**Environmental Data**

Temperature Range

-40°C to +150°C

RoHS

compliant

**Material And Plating**

Piece Parts	Material	Plating
Centre contact	Phosphor Bronze	Silver
Body	Brass	Copper-Tin-Zinc Alloy
Insulator	PTFE	

**Packing**

Singleor 100