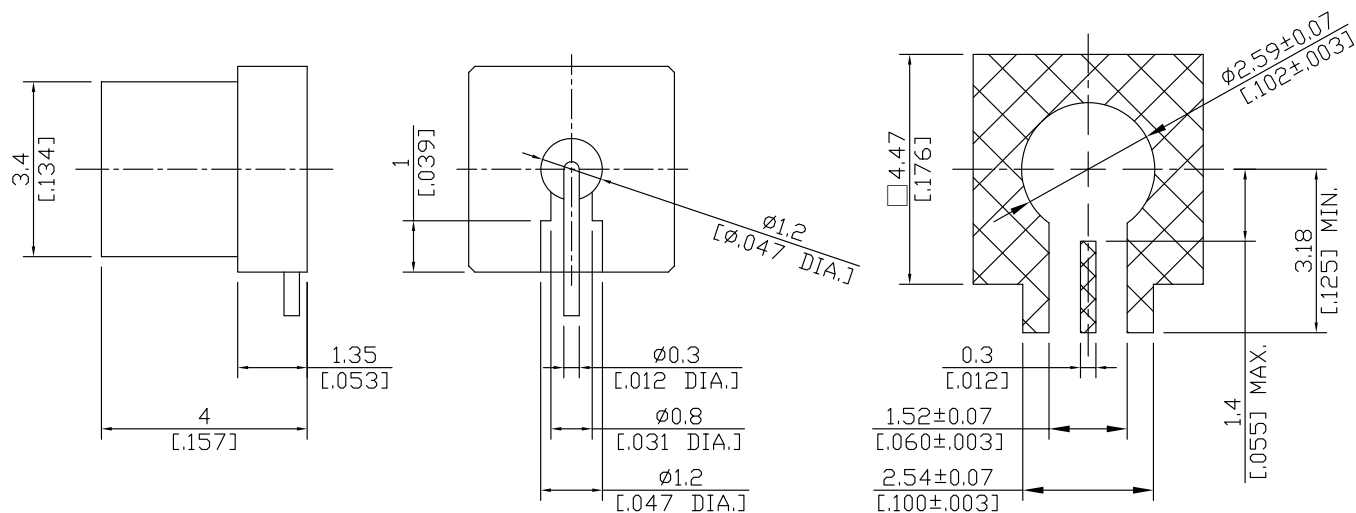


## SMPPM Plug (male) PCB Edge Mount Straight Connector Solder Attachment (Full Detent) DC-40GHz

### SMPPMFD1N50-0400A / 11



RECOMMENDED PCB LAYOUT

All dimensions are in mm [inch]

Tolerances according to DIN ISO 2768-mH

#### Interface

According to MIL-STD-348A/328-2

#### Electrical Data

Impedance 50 Ω  
Frequency DC to 40 GHz  
Insertion loss DC-18GHz:  $\leq 0.1 \times \sqrt{F}$  [GHz] dB

#### Mechanical Data

Coupling mechanisms Snap-on  
Board mounting type Edge Mount  
Weight N/A

#### Environmental Data

Temperature range -55°C to +155°C  
RoHS compliant

#### Material And Plating

Connector parts	Material	Plating
Centre contact	Brass	Gold plating(Nickel underplated)
Body	Brass	Gold plating(Nickel underplated)
Insulator	PEEK	

#### Packing

Single or 100

#### Related Document

Mounting Dimension N/A