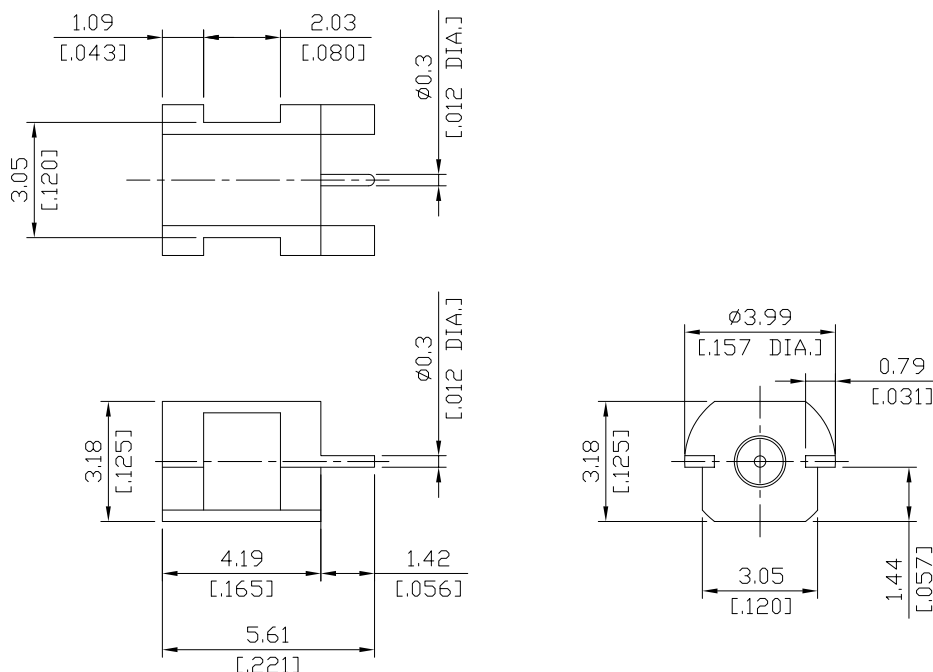


SMPM Plug (male) PCB Edge Mount Straight Connector Solder Attachment (Smooth Bore) DC-40GHz

SMPM1JS50-0561A / 9Q



All dimensions are in mm [inch]

Tolerances according to DIN ISO 2768-mH

Interface

According to MIL-STD-348A/328

Electrical Data

Impedance 50 Ω

Frequency DC to 50 GHz

VSWR (Return loss) DC-26.5 GHz: ≤ 1.10 (≥ 26.44 dB) typical 26.5-50 GHz: ≤ 1.30 (≥ 17.44 dB) typical

Insertion loss $\leq 0.04 \times \sqrt{F}$ (GHz) dB

Mechanical Data

Coupling mechanisms Snap-on

Board mounting type Edge Mount

Weight N/A

Environmental Data

Temperature range -65°C to +165°C

RoHS compliant

Material And Plating

Connector parts	Material	Plating
Centre contact	Beryllium Copper	Gold plating(Nickel underplated)
Body	Stainless Steel	Gold plating(Nickel underplated)
Insulator	PTFE	

Packing

Single or 100

Related Document

Mounting Dimension N/A