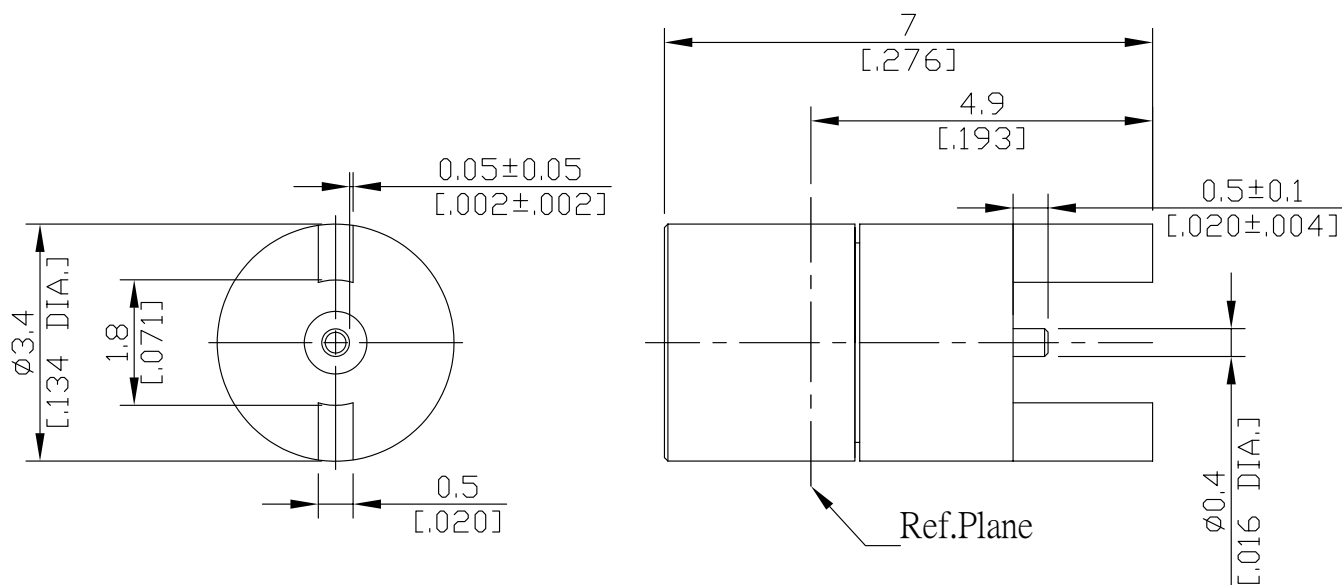


SMMP Plug (male) PCB Edge Mount Straight Connector
Solder Attachment (Full Detent) DC-65GHz VSWR≤1.33

SMMP1JF50-0700B / 91



All dimensions are in mm [inch]

Tolerances according to DIN ISO 2768-mH

Interface

According to MIL-STD-348A/328-2

Electrical Data

Impedance 50 Ω

Frequency DC to 65 GHz

VSWR (Return loss) DC-50GHz: ≤ 1.25 (≥ 19 dB) 50-65 GHz: ≤ 1.33 (≥ 17 dB)

Insertion loss ≤ 0.1 × √F [GHz] dB

- Connector only, Performance in application depends on PCB layout -

Mechanical Data

Coupling mechanisms Snap-on

Board mounting type Edge Mount

Weight N/A

Environmental Data

-55°C to +155°C
compliant

Material And Plating

Connector parts	Material	Plating
Centre contact	Beryllium Copper	Gold plating(Nickel underplated)
Body	Brass	Gold plating(Nickel underplated)
Insulator	PEEK	

Packing

Single or 100

Related Document

Mounting Dimension MD155