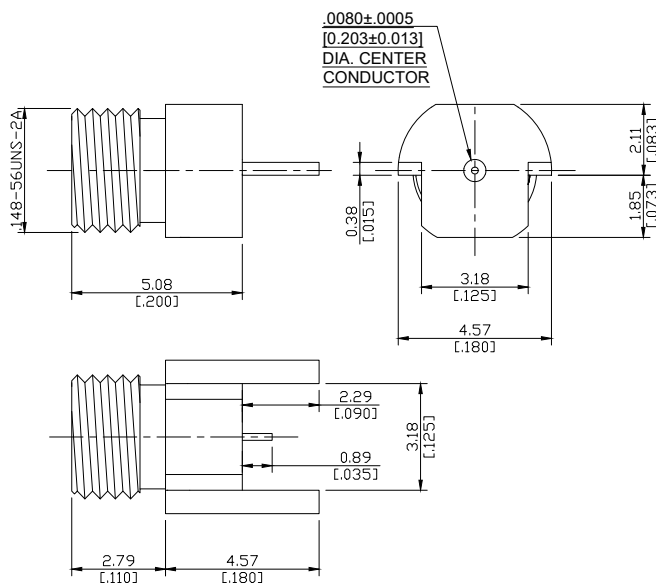


SMPM Plug (male) PCB Edge Mount Straight Connector
Solder Attachment (Full Detent) DC-50GHz VSWR≤1.30

SMPM1JF50-0508A / 9Q



All dimensions are in mm [inch]

Tolerances according to DIN ISO 2768-mH

Interface

According to MIL-STD-348A/328

Electrical Data

Impedance 50 Ω

Frequency DC to 50 GHz

VSWR (Return loss) DC-26.5 GHz: ≤ 1.10 (≥ 26.44 dB) typical 26.5-50 GHz: ≤ 1.30 (≥ 17.44 dB) typical

Insertion loss ≤ 0.04 x √F (GHz) dB

Mechanical Data

Snap-on
Edge Mount
N/A

Environmental Data

-65°C to +165°C
compliant

Material And Plating

Connector parts	Material	Plating
Centre contact	Beryllium Copper	Gold plating, 3 μinch (Non-magnetic nickel-phosphorus underplating, 80 μinch)
Body	Stainless Steel	Gold plating, 3 μinch (Non-magnetic nickel-phosphorus underplating, 80 μinch)
Insulator	PTFE	

Packing

Single or 100

Related Document

Mounting Dimension N/A

The facts and figures herein are carefully compiled to the best of our knowledge, but they are intended for general informational purposes only. In the effort to improve our products, we reserve the right to make changes judged to be necessary.

Rev.: Rosnol RF/Microwave Technology Co., Ltd.
www.rosnol.com; info@rosnol.com
Date: JUL/16/2021
Phone: +886-3-463-5095 / Fax: +886-3-463-5952
N-CAGE Code: SFKK0 / ISO9001 Certified

Page

1/1