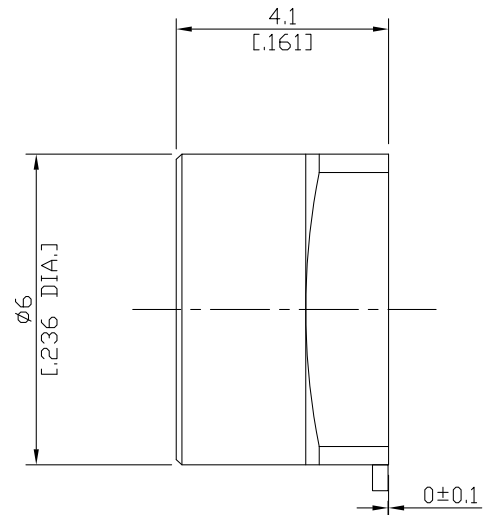
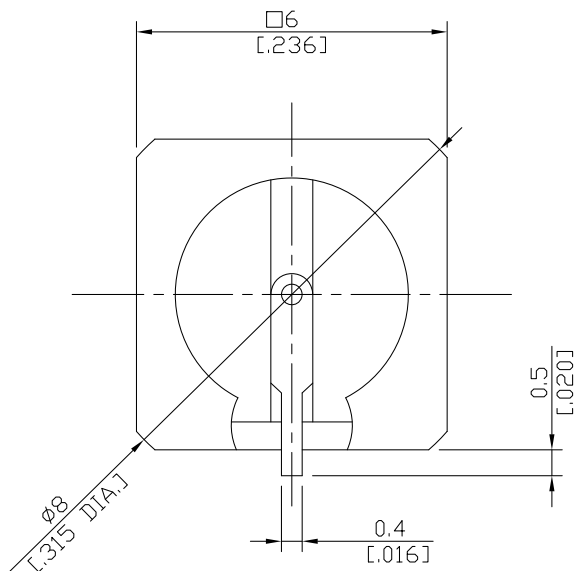


## SMP Plug (male) Connector Solder Attachment Surface Mount Straight PCB, DC-40GHz VSWR1.50

### SMP1IC50-0410A / 11



All dimensions are in mm [inch]

Tolerances according to DIN ISO 2768-mH

#### Interface

According to

MIL-STD-348B/326-1  
MIL-STD-348B/326-3  
MIL-STD-348B/326-4

MIL-STD-348B/326-1a  
MIL-STD-348B/326-2  
MIL-STD-348B/326-5

#### Electrical Data

Impedance

50 Ω

Frequency

DC to 26.5 GHz

VSWR (Return Loss)

DC to 6 GHz: ≤1.11 (≥26 dB)  
6 to 12 GHz: ≤1.20 (≥21 dB)

Insertion Loss

≤ 0.1 x √F [GHz] dB

#### Mechanical Data

Coupling mechanisms

Snap-on

Board mounting type

Edge Mount

Weight

N/A

#### Environmental Data

Temperature range

-65°C to +155°C

RoHS

compliant

#### Material And Plating

Connector parts	Material	Plating
Centre contact	Brass	Gold plating(Nickel underplated)
Body	Brass	Gold plating(Nickel underplated)
Insulator	PTFE	

#### Packing

Single or 100

#### Related Document

Mounting Dimension

N/A