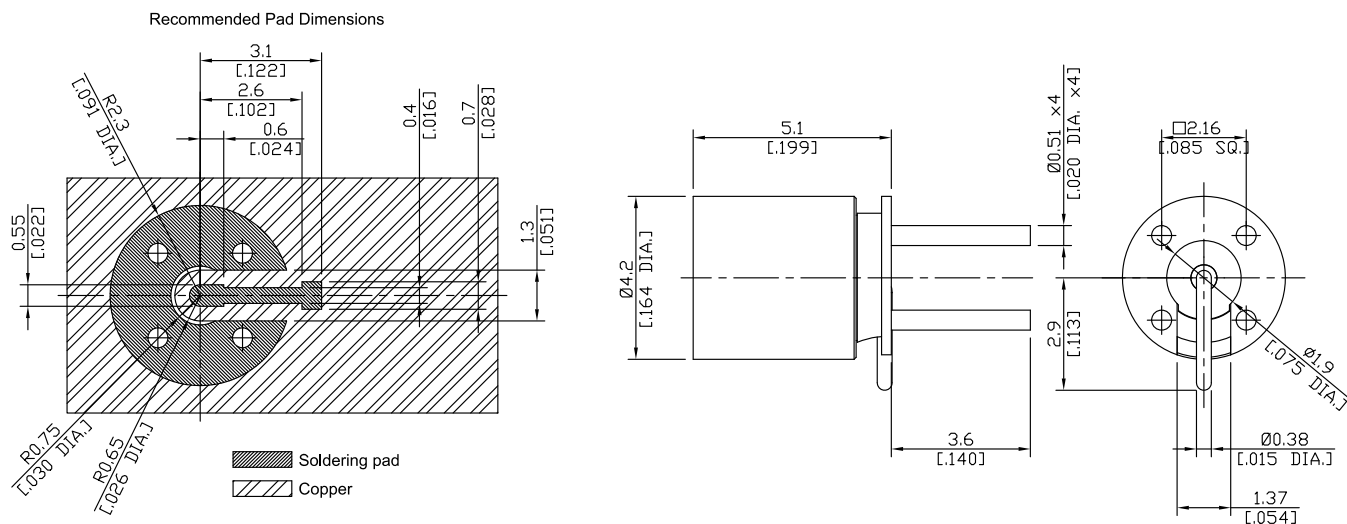


SMP Plug (male) Connector Solder Attachment  
Through Holes Straight PCB Limited Detent, DC-12.4GHz VSWR1.15

# SMP1I50-LD0870A / 9X



All dimensions are in mm [inch]

Tolerances according to DIN ISO 2768-mH

## Interface

According to

MIL-PRF-31031;SMP interface MIL-STD-348

## Electrical Data

Impedance	50 Ω
Frequency	DC to 12.4 GHz
VSWR (Return Loss)	≤ 1.15 (≥ 23.13 dB)
Insertion Loss	≤ 0.05 x √F (GHz) dB
Insulation Resistance	≥ 5 GΩ
Center Contact Resistance	≤ 6.0 mΩ
Outer Contact Resistance	≤ 2.0 mΩ
Test Voltage	500 V rms
Working Voltage (at sea level)	≤ 335 V rms

-VSWR in application depends decisive on PCB layout or cavity design-

## Material And Plating

Connector parts	Material	Plating
Centre contact	Beryllium Copper	Gold plating, 3 µinch (Non-magnetic nickel-phosphorus underplating, 100 µinch)
Body	Stainless Steel	Passivated
Insulator	PTFE	

SMP Plug (male) Connector Solder Attachment  
Through Holes Straight PCB Limited Detent, DC-12.4GHz VSWR1.15

## SMP1I50-LD0870A / 9X

### Mechanical Data

Coupling mechanisms	Snap-on
Mating Cycles	≥ 500
Centre Contact	Soldered
Captivated Type	Mechanical
Center Contact Captivation: axial	≥ 7 N
Disengagement force	9 N min.
Engagement force	45 N max.

### Environmental Data

Temperature Range	-65°C to +165°C
Thermal shock	MIL-STD-202, Meth. 107, Cond. B
Corrosion	MIL-STD-202, Meth. 204, Cond. B
Vibration	MIL-STD-202, Meth. 213, Cond.A
Moisture Resistance	MIL-STD-202, Meth. 106
RoHS	compliant

### Packing

Single or 100