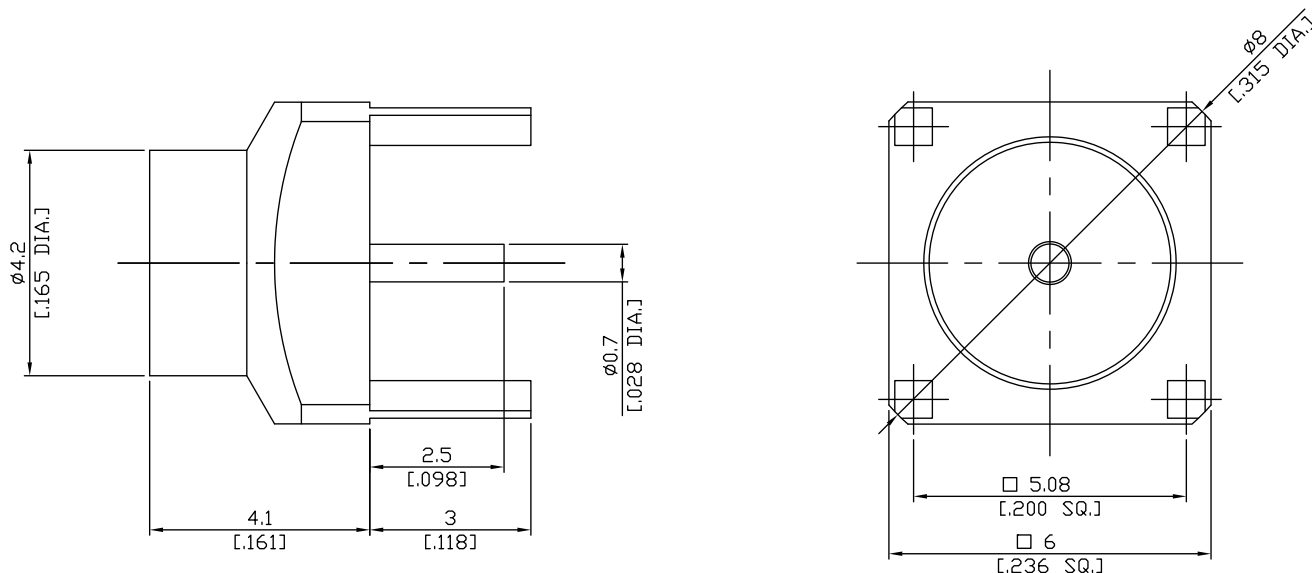


SMP Plug (male) Connector Solder Attachment
Through Holes Straight PCB Limited Detent, DC-18GHz

SMP1I50-LD0710B / 11



All dimensions are in mm [inch]

Tolerances according to DIN ISO 2768-mH

Interface

According to

MIL-STD-348B/326-1
MIL-STD-348B/326-3
MIL-STD-348B/326-4

MIL-STD-348B/326-1a
MIL-STD-348B/326-2
MIL-STD-348B/326-5

Electrical Data

Impedance	50 Ω
Frequency	DC to 18 GHz
VSWR (Return Loss)	≤ 1.20 (≥ 21 dB)
Insertion Loss	≤ 0.05 x √F (GHz) dB
Insulation Resistance	≥ 5 GΩ
Center Contact Resistance	≤ 6.0 mΩ
Outer Contact Resistance	≤ 2.0 mΩ
Test Voltage	500 V rms
Working Voltage (at sea level)	≤ 335 V rms
Contact current	1.2A DC max.

Dc to 6 GHz

Material And Plating

Connector parts	Material	Plating
Centre contact	Brass	Gold plating(Nickel underplated)
Body	Brass	Gold plating(Nickel underplated)
Insulator	PTFE	

SMP Plug (male) Connector Solder Attachment Through Holes Straight PCB Limited Detent, DC-18GHz

SMP1I50-LD0710B / 11

Mechanical Data

Coupling mechanisms	Snap-on
Mating Cycles	≥ 500
Centre Contact	Soldered
Captivated Type	Mechanical
Center Contact Captivation: axial	≥ 7 N
Disengagement force	9 N min.
Engagement force	45 N max.

Environmental Data

Temperature Range	-65°C to +155°C
Thermal shock	MIL-STD-202, Meth. 107, Cond. B
Corrosion	MIL-STD-202, Meth. 204, Cond. B
Vibration	MIL-STD-202, Meth. 213, Cond.A
Moisture Resistance	MIL-STD-202, Meth. 106
Max. soldering temperature	IEC 61760-1, +260°C for 10 sec.
RoHS	compliant

Packing

Single or 100