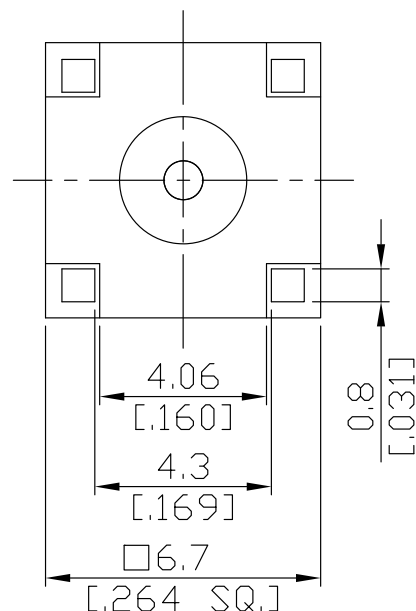
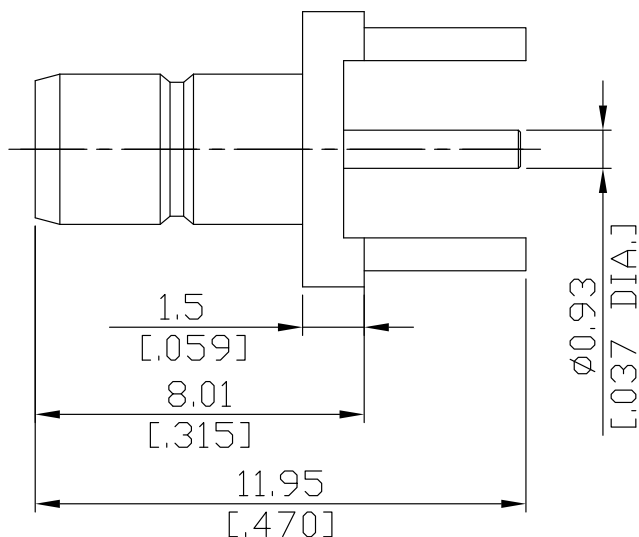


SMB Jack (female) Connector Solder Attachment PCB Through Holes Straight, DC-4GHz VSWR1.29

SMB2I50-1195C / 11



All dimensions are in mm [inch]

Tolerances according to DIN ISO 2768-mH

Interface

According to

IEC 60169-10, CECC 22130

MIL-STD-348B/311-1, MIL-STD-348B/311-1

Electrical Data

Impedance

50 Ω

Frequency

DC to 4 GHz

VSWR (Return Loss)

≤ 1.29 (≥ 18 dB)

3 to 4 GHz

Insertion Loss

≤ 0.1 × √F (GHz) dB

Insulation Resistance

≥ 1 × 10³ MΩ

Center Contact Resistance

≤ 5 mΩ

Outer Contact Resistance

≤ 2.5 mΩ

Test Voltage

750 V rms, 50 Hz, at sea level

Working Voltage (at sea level)

≤ 250 V rms, 50 Hz, at sea level

Contact current

1.5 A DC typ.

RF-leakage

≤ 55 dB up to 1 GHz

Material And Plating

Connector parts	Material	Plating
Centre contact	Brass	Gold plating(Nickel underplated)
Body	Brass	Gold plating(Nickel underplated)
Insulator	PTFE	

SMB Jack (female) Connector Solder Attachment PCB Through Holes Straight, DC-4GHz VSWR1.29

SMB2I50-1195C / 11

Mechanical Data

Coupling mechanisms	Snap-on
Mating Cycles	≥ 500
Centre Contact	Soldered
Captivated Type	Mechanical
Center Contact Captivation: axial	≥ 27 N
Engagement force	≥ 63 N
Disengagement force	8 N min. to 63 N max.

Environmental Data

Temperature Range	-55°C to +155°C
Thermal shock	MIL-STD-202, Meth. 107, Cond. B
Corrosion	MIL-STD-202, Meth. 101, Cond. B
Vibration	MIL-STD-202, Meth. 204, Cond.D
Moisture Resistance	MIL-STD-202, Meth. 106
Max. soldering temperature	IEC 61760-1, +260°C for 10 sec.
RoHS	compliant

Packing

Single or 100