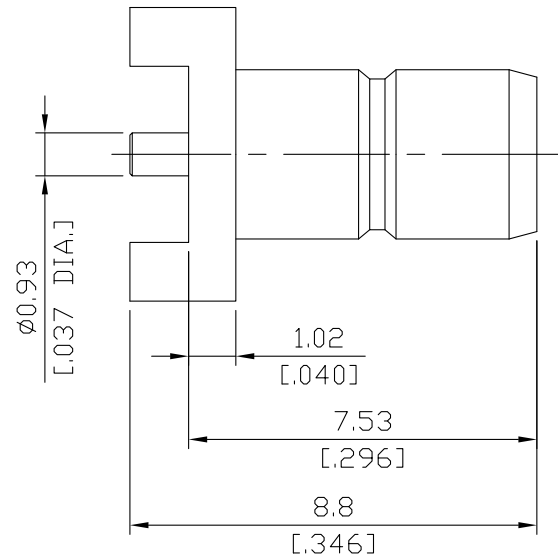
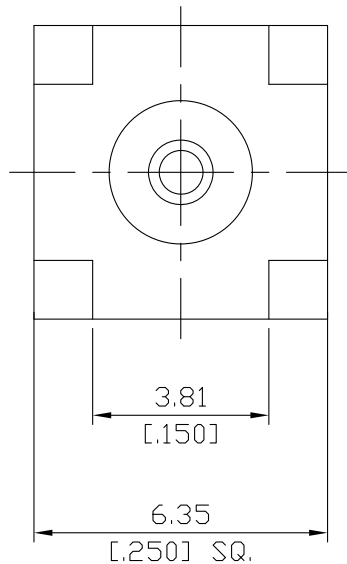


SMB Jack (female) Connector Solder Attachment  
PCB Surface Mount Straight, DC-4GHz VSWR1.29

**SMB2I50-0880A / 11**



All dimensions are in mm [inch]

Tolerances according to DIN ISO 2768-mH

**Interface**

According to

IEC 60169-10, CECC 22130

MIL-STD-348B/311-1, MIL-STD-348B/311-1

**Electrical Data**

Impedance

50 Ω

Frequency

DC to 4 GHz

VSWR (Return Loss)

≤ 1.29 (≥ 18 dB)

3 to 4 GHz

Insertion Loss

≤ 0.1 × √F (GHz) dB

Insulation Resistance

≥ 1 × 10<sup>3</sup> MΩ

Center Contact Resistance

≤ 5 mΩ

Outer Contact Resistance

≤ 2.5 mΩ

Test Voltage

750 V rms, 50 Hz, at sea level

Working Voltage (at sea level)

≤ 250 V rms, 50 Hz, at sea level

Contact current

1.5 A DC typ.

RF-leakage

≤ 55 dB up to 1 GHz

**Material And Plating**

Connector parts	Material	Plating
Centre contact	Brass	Gold plating(Nickel underplated)
Body	Brass	Gold plating(Nickel underplated)
Insulator	PTFE	
Coupling	Brass	Gold plating(Nickel underplated)

## SMB Jack (female) Connector Solder Attachment PCB Surface Mount Straight, DC-4GHz VSWR1.29

### SMB2I50-0880A / 11

#### Mechanical Data

Coupling mechanisms	Snap-on
Mating Cycles	≥ 500
Centre Contact	Soldered
Captivated Type	Mechanical
Center Contact Captivation: axial	≥ 27 N
Engagement force	≥ 63 N
Disengagement force	8 N min. to 63 N max.

#### Environmental Data

Temperature Range	-55°C to +155°C
Thermal shock	MIL-STD-202, Meth. 107, Cond. B
Corrosion	MIL-STD-202, Meth. 101, Cond. B
Vibration	MIL-STD-202, Meth. 204, Cond.D
Moisture Resistance	MIL-STD-202, Meth. 106
Max. soldering temperature	IEC 61760-1, +260°C for 10 sec.
RoHS	compliant

#### Packing

Single or 100