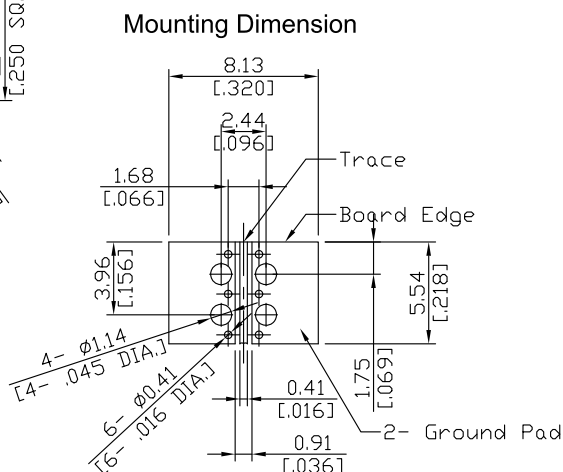
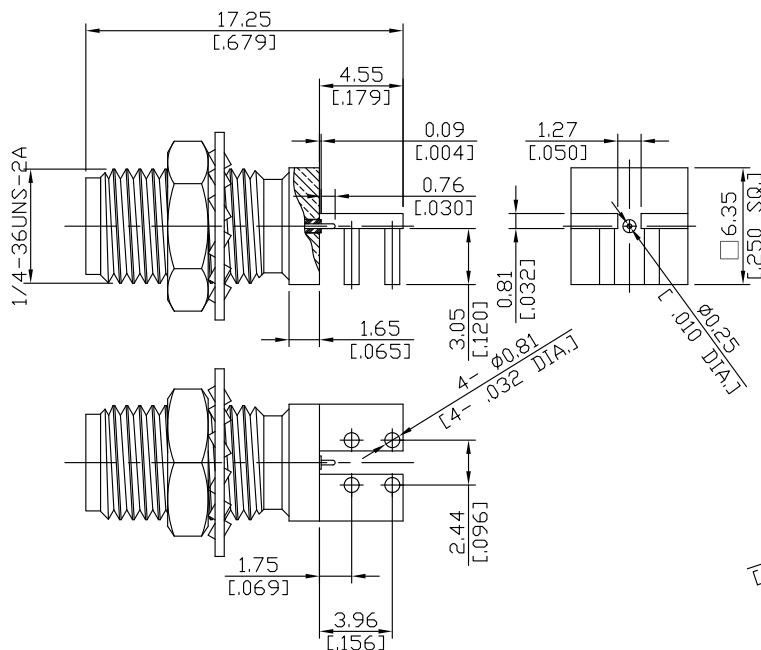


**SMA Jack (Female) Commercial Grade Connector Solder Attachment
End Launch Thru Hole PCB**

SMA2MA50-1725A / 91



All dimensions are in mm [inch]
Tolerances according to DIN ISO 2768-mH

Interface

According to

IEC 60169-15; CECC 22110; MIL-PRF-39012; MIL-STD-348B/310; EN 122110

Electrical Data

Impedance	50 Ω	
Frequency	DC to 18 GHz	
VSWR (Return Loss)	≤ 1.25 (≥ 19.08 dB)	
Insertion Loss	≤ 0.04 x √F (GHz) dB	
Insulation Resistance	≥ 5 GΩ	
Center Contact Resistance	≤ 3.0 mΩ	
Outer Contact Resistance	≤ 2.0 mΩ	
Test Voltage (at sea level)	1000 V rms	
Working Voltage (at sea level)	480 V rms	
Power Handling (at 20 °C, sea level, VSWR 1.0)	≤ 200 W @ 2 GHz	≤ 100 W @ 10 GHz
RF Leakage	≤ 100 dB up to 1 GHz	

-VSWR in application depends decisive on PCB layout-

Material And Plating

Piece Parts	Material	Plating
Centre contact	Beryllium Copper	Gold plating (Non-magnetic nickel-phosphorus underplating)
Body	Brass	Gold plating (Non-magnetic nickel-phosphorus underplating)
Insulator	PTFE	
Fastening nut	Brass	Gold plating (Non-magnetic nickel-phosphorus underplating)
Washer	Brass	Gold plating (Non-magnetic nickel-phosphorus underplating)

**SMA Jack (Female) Commercial Grade Connector Solder Attachment
End Launch Thru Hole PCB**

SMA2MA50-1725A / 91

Mechanical Data

Coupling mechanisms	Screw-lock
Mating cycles	min. 500
Captivated Type	Mechanical
Centre Contact	Soldered
Outer Contact	Soldered
Center contact captivation: axial	≥ 20 N
Board mounting type	End Launch / Through Hole
Coupling test torque	max. 1.7 Nm
Recommended torque	0.8 Nm to 1.1 Nm

Environmental Data

Temperature Range	-65°C to +165°C
Thermal shock	MIL-STD-202, Meth. 107, Cond. B
Corrosion	MIL-STD-202, Meth. 101, Cond. B
Vibration	MIL-STD-202, Meth. 204, Cond. D
Shock	MIL-STD-202, Meth. 213, Cond. I
Moisture Resistance	MIL-STD-202, Meth. 106
RoHS	compliant

Packing

Single or 100