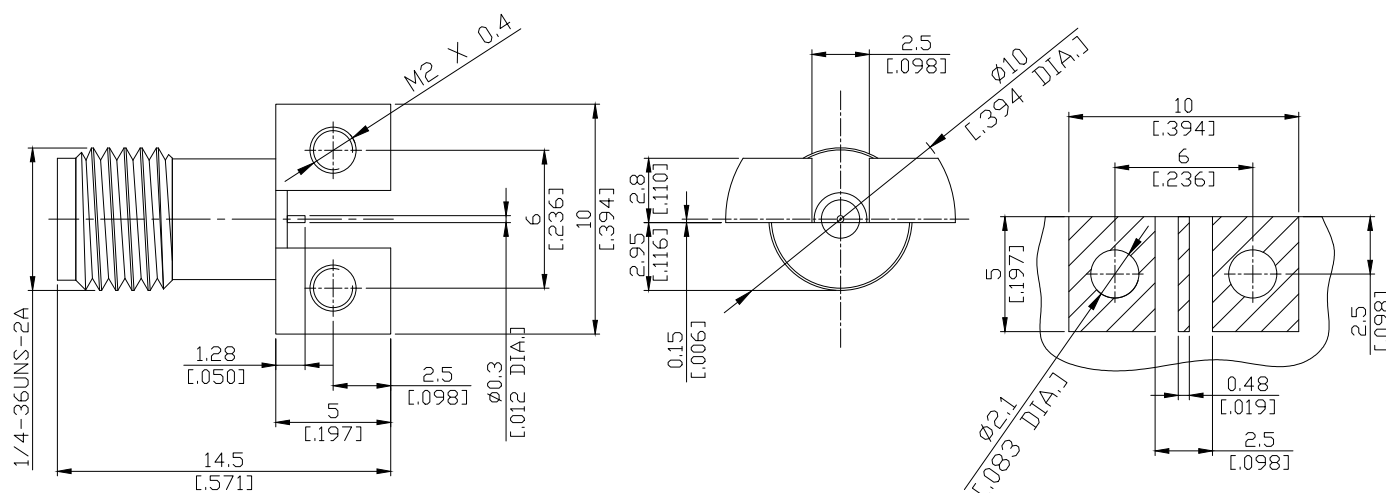


SMA Jack (female) Rightangle Connector Solder Attachment Stub Terminal
PCB Edge Mount , DC- 18 GHz VSWR1.40

SMA2J59-1450A / 91



All dimensions are in mm [inch]

Tolerances according to DIN ISO 2768-mH

Interface

According to

IEC 60169-15, MIL-STD-348B/310

Electrical Data

Impedance	50 Ω	
Frequency	DC to 18 GHz	
VSWR (Return Loss)	≤ 1.40 (≥ 23.13 dB)	
Insertion Loss	≤ 0.03 x √F (GHz) dB	
Insulation Resistance	≥ 5 GΩ	
Center Contact Resistance	≤ 3 mΩ	
Outer Contact Resistance	≤ 2 mΩ	
Test Voltage (at sea level)	1000 V rms	
Working Voltage (at sea level)	480 V rms	
Power Handling	≤ 200 W @ 2 GHz	≤ 100 W @ 10 GHz
RF Leakage	≥ 100 dB @ up to 1 GHz	

- VSWR in application depends decisive on PCB layout -

Material And Plating

Piece Parts	Material	Plating
Centre Contact	Beryllium Copper	Gold plating, 3 μinch (Non-magnetic nickel-phosphorus underplating, 80 μinch)
Body	Brass	Gold plating, 3 μinch (Non-magnetic nickel-phosphorus underplating, 80 μinch)
Insulator	PTFE	
Washer	Brass	Gold plating, 3 μinch (Non-magnetic nickel-phosphorus underplating, 80 μinch)
Fasten Nut	Brass	Gold plating, 3 μinch (Non-magnetic nickel-phosphorus underplating, 80 μinch)

The facts and figures herein are carefully compiled to the best of our knowledge, but they are intended for general informational purposes only. In the effort to improve our products, we reserve the right to make changes judged to be necessary.

Rev.:
Date: NOV/4/2021

Rosnol RF/Microwave Technology Co., Ltd.
www.rosnol.com; info@rosnol.com
Phone: +886-3-463-5095 / Fax: +886-3-463-5952
N-CAGE Code: SFKK0 / ISO9001 Certified

Page

1/2

SMA Jack (female) Rightangle Connector Solder Attachment Stub Terminal
PCB Edge Mount , DC- 18 GHz VSWR1.40

SMA2J59-1450A / 91

Mechanical Data

Coupling mechanisms	Screw-lock
Board Mounting Type	Edge Mount
Mating Cycles	≥ 500
Center Contact Captivation: axial	≥ 20 N
Coupling Test Torque	Max. 0.6 Nm
Recommended Torque	0.57 Nm

Environmental Data

Temperature Range	-65°C to +165°C
Thermal Shock	MIL-STD-202, Meth. 107, Cond. B
Corrosion	MIL-STD-202, Meth. 101, Cond. B
Vibration	MIL-STD-202, Meth. 204, Cond. D
Shock	MIL-STD-202, Meth. 213, Cond. I
Moisture Resistance	IEC 60529, IP68 1h / 25m
Max. Soldering Temperature	IEC 61760-1, +260°C for 10 sec.
RoHS	compliant

Packing

Single or 100