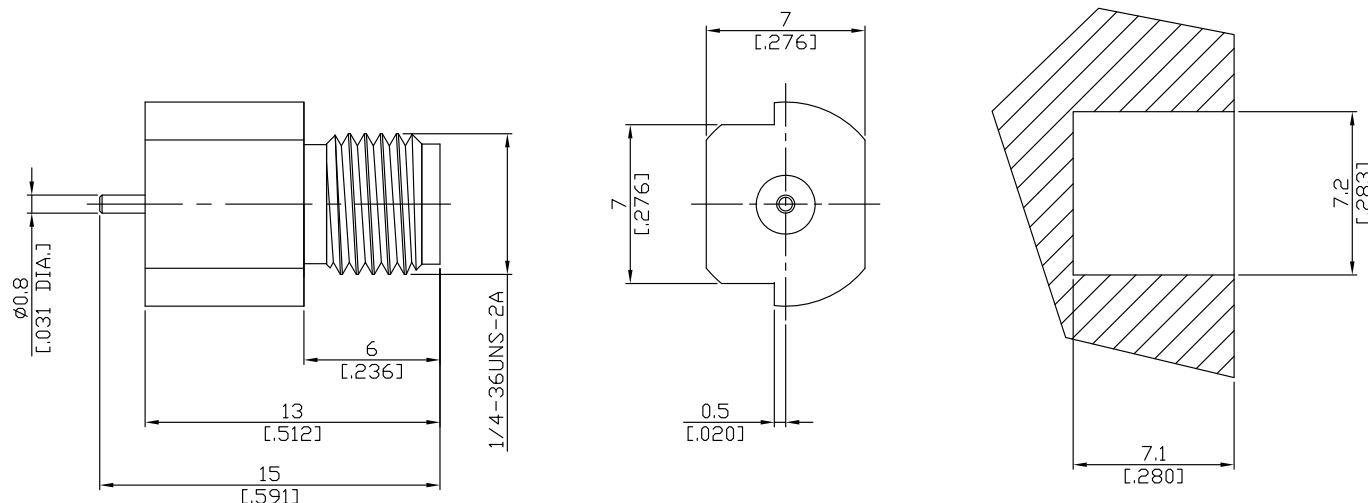


SMA Jack (Female) PCB Edge Mount Straight Connector
DC-18 GHz VSWR1.45

SMA2J50-1500B / 91

MOUNTING DIMENSION



All dimensions are in mm [inch]

Tolerances according to DIN ISO 2768-mH

Interface

According to

IEC 60169-15; MIL-STD-348B/310

Electrical Data

| | |
|--|-----------------------------------|
| Impedance | 50 Ω |
| Frequency | DC to 18 GHz |
| VSWR (Return Loss) | ≤ 1.45 (≥ 14.72 dB) |
| Insertion Loss | ≤ 0.03 x √F (GHz) dB |
| Insulation Resistance | ≥ 5 GΩ |
| Center Contact Resistance | ≤ 3 mΩ |
| Outer Contact Resistance | ≤ 2 mΩ |
| Test Voltage | 1000 V rms |
| Working Voltage (at sea level) | 480 V rms |
| Power Handling (at 20 °C, sea level, VSWR 1.0) | ≤ 200 W @ 2 GHz; ≤ 100 W @ 10 GHz |
| RF-leakage | 100 dB up to 1 GHz |

- VSWR in application depends decisive on PCB layout -

Material And Plating

| Connector parts | Material | Plating |
|-----------------|------------------|--|
| Centre contact | Beryllium Copper | Gold plating, 3 pinch (Non-magnetic nickel-phosphorus underplating, 80 pinch) |
| Body | Brass | Gold plating, 3 pinch (Non-magnetic nickel-phosphorus underplating, 80 pinch) |
| Insulator | PTFE | |

SMA Jack (Female) PCB Edge Mount Straight Connector
DC-18 GHz VSWR1.45

SMA2J50-1500B / 91

Mechanical Data

| | |
|-----------------------------------|------------------|
| Coupling mechanisms | Screw-lock |
| Mating cycles | min. 500 |
| Center contact captivation: axial | ≥ 27 N |
| Board mounting type | Edge mount |
| Coupling test torque | max. 1.7 Nm |
| Recommended torque | 0.8 Nm to 1.1 Nm |

Environmental Data

| | |
|---------------------|---------------------------------|
| Temperature Range | -65°C to +165°C |
| Thermal shock | MIL-STD-202, Meth. 107, Cond. B |
| Corrosion | MIL-STD-202, Meth. 101, Cond. B |
| Vibration | MIL-STD-202, Meth. 204, Cond. D |
| Shock | MIL-STD-202, Meth. 213, Cond. I |
| Moisture Resistance | MIL-STD-202, Meth. 106 |
| RoHS | compliant |

Packing

Single or 100