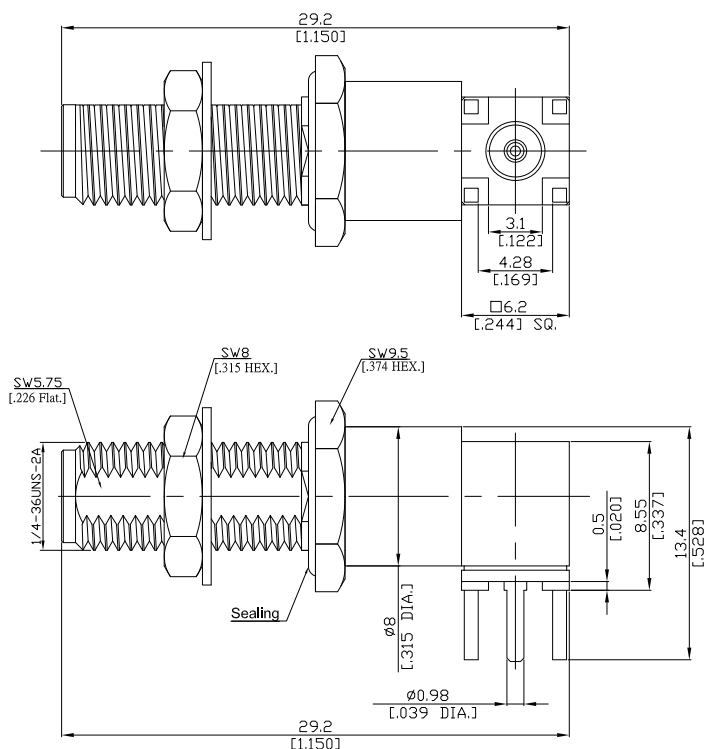


SMA Jack (female) PCB Through Holes Right Angle For Bulkhead Connector
Solder Attachment DC-18GHz VSWR1.25

SMA2IA59-2920A / 91



All dimensions are in mm [inch]

Tolerances according to DIN ISO 2768-mH

Interface

According to

IEC 60169-15; MIL-STD-348B/310

Electrical Data

Impedance

50 Ω

Frequency

DC to 18 GHz

VSWR (Return Loss)

≤ 1.25 (≥ 19.1 dB)

Insertion Loss

≤ 0.04 × √F (GHz) dB

Insulation Resistance

≥ 5 GΩ

Center Contact Resistance

≤ 3 mΩ

Outer Contact Resistance

≤ 2 mΩ

Test Voltage

1000 V rms

Working Voltage (at sea level)

480 V rms

Power Handling (at 20 °C, sea level, VSWR 1.0)

≤ 200 W @ 2 GHz; ≤ 100 W @ 10 GHz

RF-leakage

100 dB up to 1 GHz

Material And Plating

Connector parts	Material	Plating
Centre contact	Beryllium Copper	Gold plating, 3 pinch (Non-magnetic nickel-phosphorus underplating, 80 pinch)
Body	Brass	Gold plating, 3 pinch (Non-magnetic nickel-phosphorus underplating, 80 pinch)
Insulator	PTFE	

SMA Jack (female) PCB Through Holes Right Angle For Bulkhead Connector
Solder Attachment DC-18GHz VSWR1.25

SMA2IA59-2920A / 91

Mechanical Data

Coupling mechanisms	Screw-lock
Mating cycles	min. 500
Center contact captivation: axial	≥ 27 N
Board mounting type	Through Holes
Coupling test torque	max. 1.7 Nm
Recommended torque	0.8 Nm to 1.1 Nm

Environmental Data

Temperature Range	-65°C to +165°C
Thermal shock	MIL-STD-202, Meth. 107, Cond. B
Corrosion	MIL-STD-202, Meth. 101, Cond. B
Vibration	MIL-STD-202, Meth. 204, Cond. D
Shock	MIL-STD-202, Meth. 213, Cond. I
Moisture Resistance	MIL-STD-202, Meth. 106
RoHS	compliant

Packing

Single or 100